



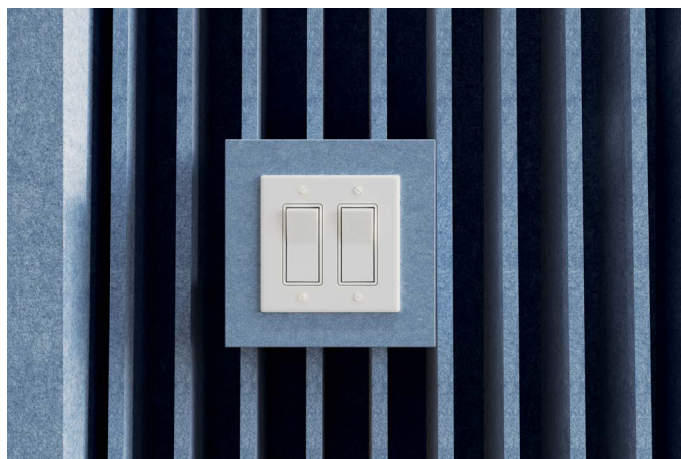
## Wall and Ceiling Trim

Premier and WoodGrain Collections

Trim options from Acoufelt are designed to complete applications with clean, refined accessories that reinforce the overall design intent. More than finishing touches, they integrate sound-absorbing products seamlessly into the built environment—elevating acoustic solutions from applied elements to architectural features. Like crafted reveals or millwork details, trim options like framed outlets, switches, sprinkler heads, and egress signage deliver visual continuity and precision, making every installation feel intentional and complete from any angle.

## Specifications

<b>Surface</b>	Wall and Ceiling
<b>Material</b>	FilaSorb™ polyester felt
<b>Weight</b>	0.49 lb./ft <sup>2</sup> (±10%)
<b>Standard Sizes</b>	<b>Accessory Trim</b> Width: 4" up to 30" W (1" increments) Length: 4" up to 92" L (1" increments) Depth: 1" up to 7" D (1/2" increments)  <b>Base Trim</b> Height: 5, 7" H Length: 110" L Depth: 1" up to 7" D (1/2" increments)  <b>Door/Window Trim</b> Width: 2" up to 7" W (1" increments) Length: 110" L Depth: 1" up to 7" D (1/2" increments)  <b>Outlet/Switch Trim</b> Width: 6, 8 and 10" W Height: 8" H Depth: 1" up to 7" D (1/2" increments)  <b>Corner Trim</b> Height: 110" H Depth: 1" up to 7" D (1/2" increments)



Switch Wall Trim in Periwinkle

## Technical

<b>NRC Rating</b>	N/A
<b>Fire Test</b>	ASTM E84, Class A CAN/ULC-S102 Flame spread index: 15 Smoke developed index: 200
<b>Colorfastness</b>	ISO 105-B02, 6-7

## Details

<b>Lead Time</b>	3 – 6 weeks
<b>Origin</b>	Manufactured and assembled in the US
<b>Warranty</b>	Product: 20 years* Colorfastness: 20 years*

\* Conditions apply

## Environmental

<b>Recycled Content</b>	Minimum 60%
<b>Energy</b>	Generated using 40% solar energy
<b>Indoor Air Quality</b>	VOC less than/equal to 0.5mg/m <sup>3</sup>
<b>Recyclable</b>	100%*
<b>Certifications</b>	Health Product Declaration (HPD)** Declare Certification - LBC Red List Free (third-party verified) SCS Global Indoor Advantage Gold

\* PET is recyclable through participating partners

\*\* HPD only applies to 12mm thickness



®The Health Product Declaration logo is a registered trademark of HPD Collaborative.



For questions or additional product information,  
visit [acoufelt.com](https://www.acoufelt.com) or call 800.966.8557.

Wall and Ceiling Trim | April 2026

# Colorways

## PREMIER



White  
WH12



Milkyway  
MI74



Ivory  
IV11



Pearl  
PE21



Valentine  
VA70



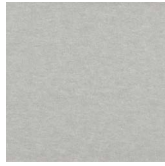
Quartz  
QU67



Stonewash  
ST72



Sea Salt  
SE57



Platinum  
PL04



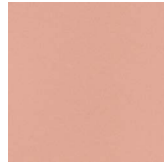
Almond  
AL55



Pistachio  
PI25



Turmeric  
TU60



Flamingo  
FL61



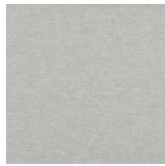
Amethyst  
AM69



Periwinkle  
PE23



Peacock  
PE20



Metal  
ME03



Mushroom  
MU75



Celery  
CE65



Wheat  
WH68



Peach  
PE19



Lilac  
LI13



Marine  
MA15



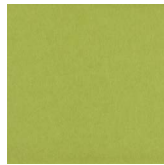
Sencha  
SE58



Grey  
GR02



Umber  
UM54



Wasabi  
WA29



Popcorn  
PO26



Currant  
CU59



Berry  
BE06



Azure  
AZ05



Oregano  
OR18



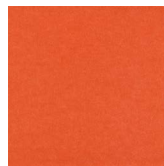
Charcoal  
CH01



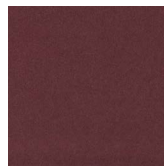
Walnut  
WA56



Eucalyptus  
EU71



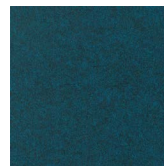
Carrot  
CA08



Loganberry  
LO77



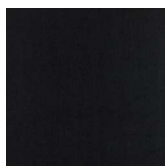
Granite  
GR62



Denim  
DE09



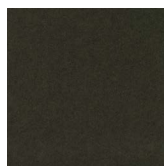
Kale  
KA12



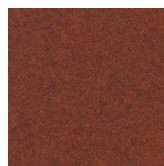
Piano Black  
PI24



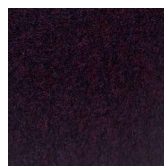
Slate  
SL27



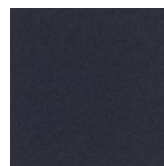
Nori  
NO76



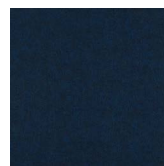
Peppercorn  
PE22



Shiraz  
SH63



Flint  
FL64



Midnight  
MI16

Order samples at [acoufelt.com/colorways](https://acoufelt.com/colorways)



For questions or additional product information,  
visit [acoufelt.com](https://acoufelt.com) or call 800.966.8557.

Wall and Ceiling Trim | April 2026

# Colorways

## WOODGRAIN



Picket Fence  
WQ01



Loft  
WQ06



White Elm  
WQ07



Lyed Larch  
WQ30



White Oak  
WQ13



Baltic Birch  
WQ12



Knotty Spruce  
WQ29



French Bobbin  
WQ08



Boat Shed  
WQ02



Nordic Plank  
WQ15



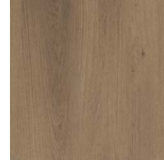
Boardwalk  
WQ10



Mocha Legno  
WQ25



Mountain Lodge  
WQ24



Wine Barrel  
WQ03



Log Cabin  
WQ04



Natural Oak  
WQ16



Woodland Fog  
WQ22



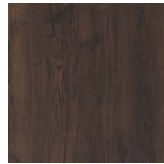
Driftwood  
WQ21



Weathered Slate  
WQ14



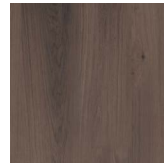
Petrified Ash  
WQ23



Antique Chest  
WQ11



European Larch  
WQ17



Fumed Oak  
WQ19



Teak  
WQ18



Charred Larch  
WQ09



Shadow Oak  
WQ28



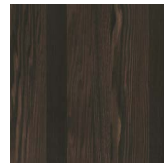
Barn Door  
WQ05



Black Walnut  
WQ20



Scorched Timber  
WQ26



Espresso Oak  
WQ27

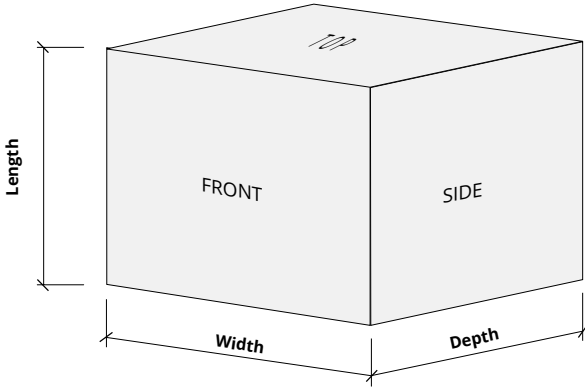


For questions or additional product information,  
visit [acoufelt.com](https://www.acoufelt.com) or call **800.966.8557**.

Wall and Ceiling Trim | April 2026

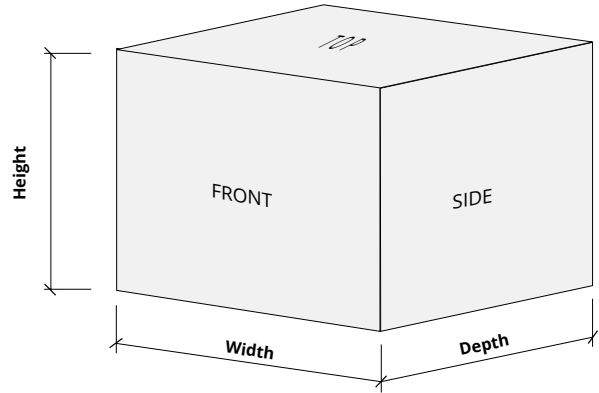
# Sizes

**Accessory Trim** Width: 4" up to 30" W (1" increments)  
 Length: 4" up to 92" L (1" increments)  
 Depth: 1" up to 7" D (1/2" increments)



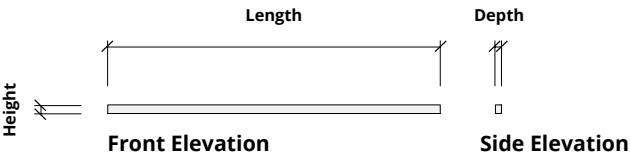
Accessory trim works for a variety of applications including fire extinguishers, egress signage, sprinklers, mechanical elements, etc.

**Outlet/Switch Trim** Width: 6, 8 and 10" W  
 Height: 8" H  
 Depth: 1" up to 7" D (1/2" increments)



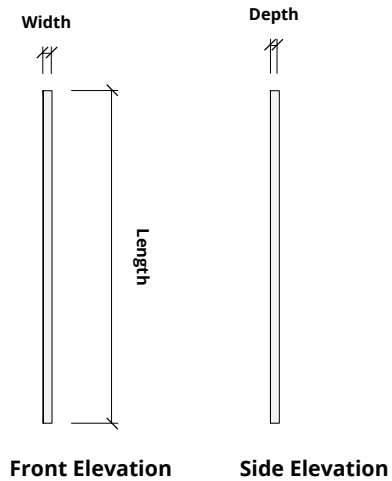
Inside back of box includes electrical box cutout markings.  
 Single gang = 6" W. Double gang = 8" W. Triple gang = 10" W

**Base Trim** Height: 5, 7" H  
 Length: 110" L  
 Depth: 1" up to 7" D (1/2" increments)



\* Reference local electrical codes before installation.

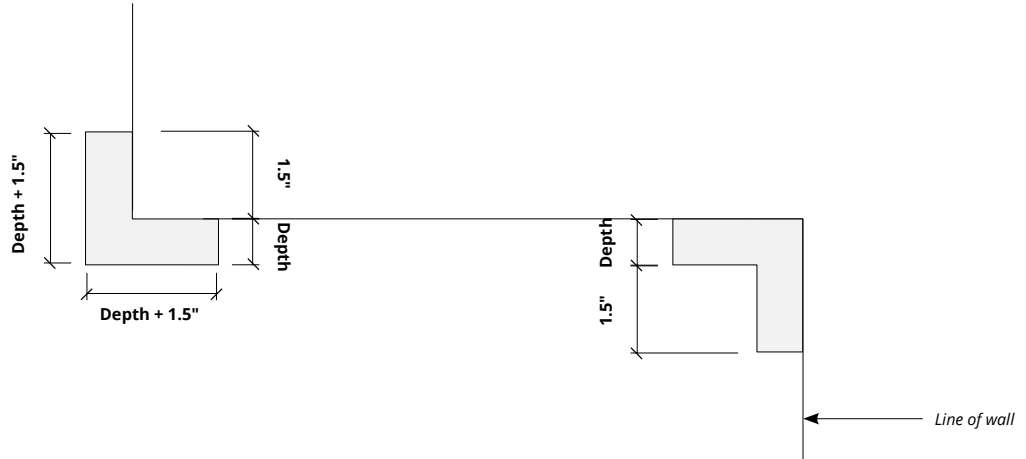
**Door/ Window Trim** Width: 2" up to 7" H (1" increments)  
 Length: 110" L  
 Depth: 1" up to 7" D (1/2" increments)



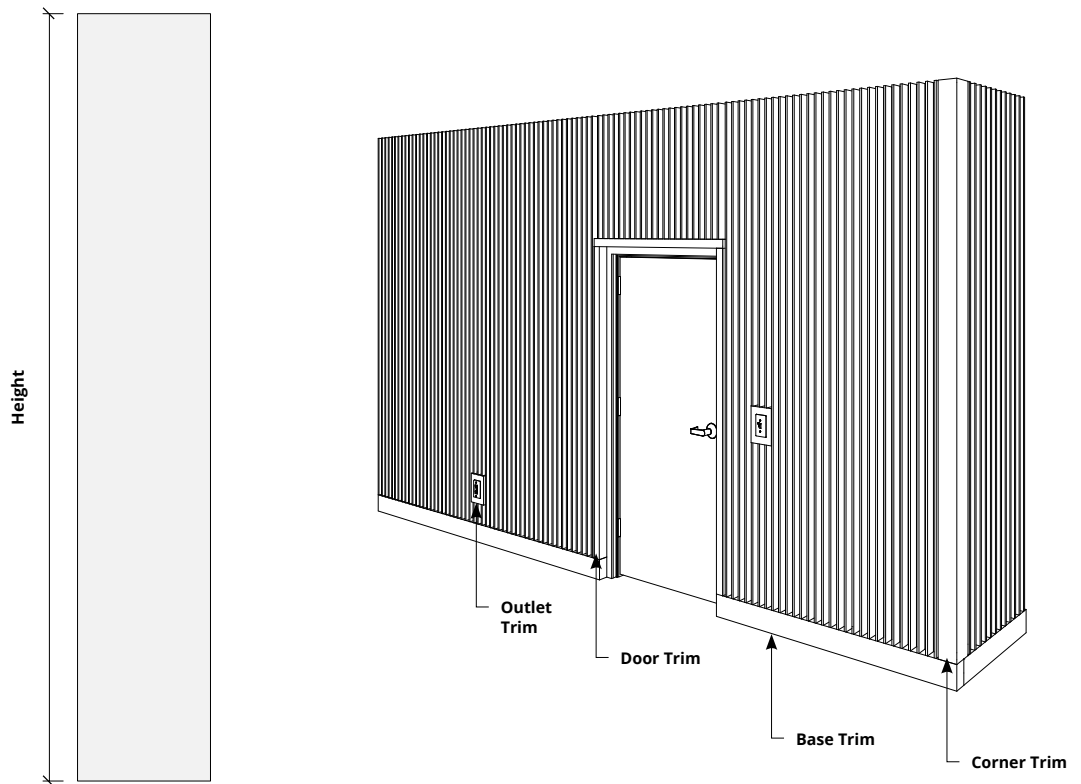
## Sizes (cont.)

**Corner Trim**      Height: 110" H  
                            Depth: 1" up to 7" D (1/2" increments)

### Plan

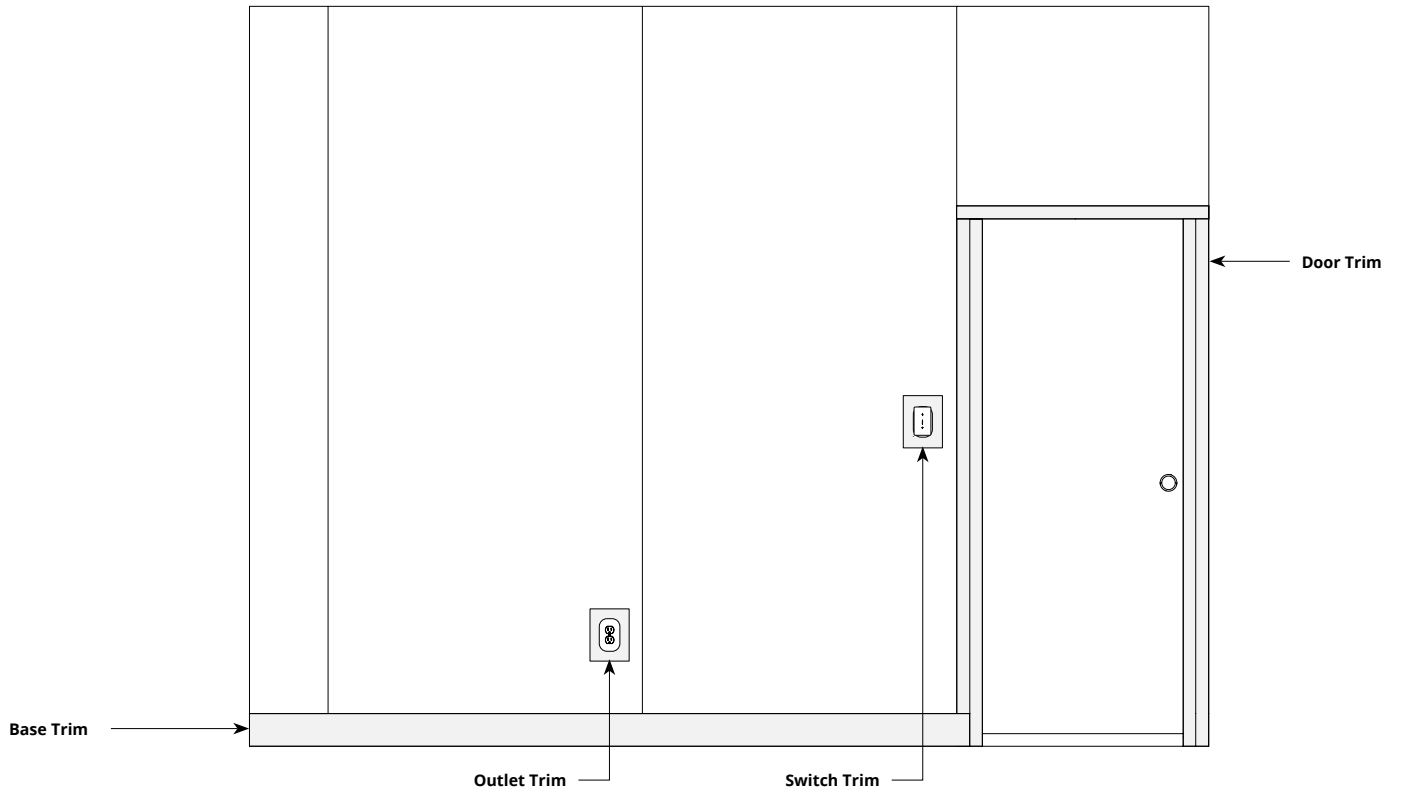


### Elevation

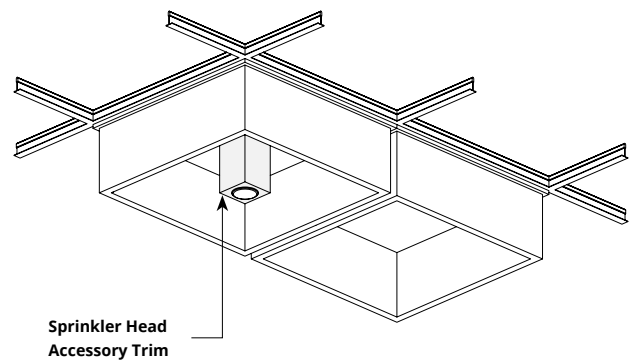
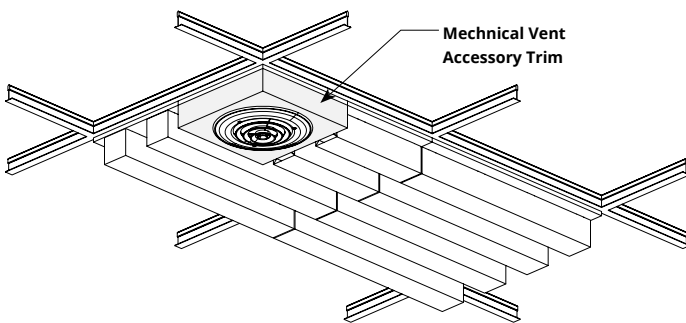


# Sample Drawings

## Wall Elevation



## Ceiling Perspectives



# How to Specify

## 1. Choose Trim Options

## 2. Choose Sizes

## 3. Choose Colorways

Determine which trim items are needed to complete your design: Accessory Trim, Base Trim, Corner Trim, Outlet/Switch Trim, and/or Door/Window Trim.

---

## 1. Choose Trim Options

## 2. Choose Sizes

## 3. Choose Colorways

Determine preferred width, height and depth for each accessory item.

---

## 1. Choose Trim Options

## 2. Choose Sizes

## 3. Choose Colorways

See colorways on pages 3 and 4.