

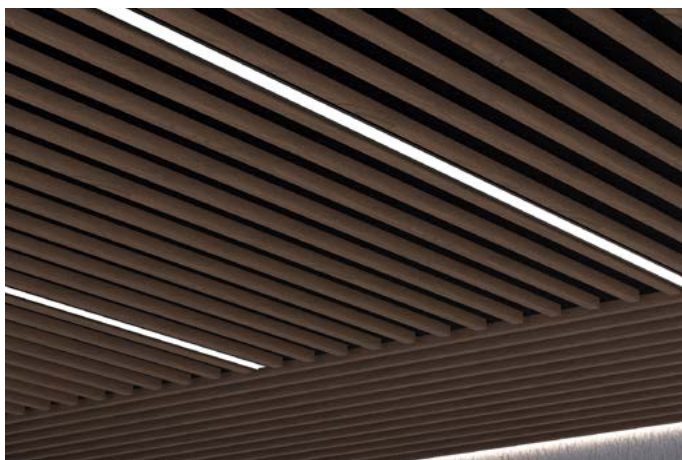
SoftenerUp, Plateau Ceiling Frames

WoodGrain Collection

SoftenerUp™ modular ceiling frames bring warmth and comfort to any space. The Plateau design features SoftenerUp's most compact slat profile, combining clean, linear design with exceptional acoustic performance. Each tile offers discreet yet effective sound absorption and integrates effortlessly into standard T-grid drop-ceiling systems. Available in a variety of sizes and woodgrain prints, Plateau allows for creative flexibility and personalized design expression.

Specifications

Surface	Ceiling	
Material	FilaSorb™ polyester felt	
Weight	0.49 lb./ft ² (±10%)	
Standard Sizes	Height: 1", 2" H Thickness: 1" up to 5" T Backer Panels: 24" W x 24" L 24" W x 48" L 24" W x 96" L	
Compatible T-grid	Type	Layout
	15/16" Flat	Standard 24" x 24"
	9/16" Flat	Standard 24" x 24"



SoftenUp, Plateau Ceiling Frames in Mountain Lodge

Technical

NRC Rating	0.95*
Fire Test	ASTM E84, Class A CAN/ULC-S102 Flame spread index: 15 Smoke developed index: 200
Water Sorption	ASTM C1104-2019 (A Modified) Water sorbed by weight: 0.20% (based on a 12mm thick panel)
Colorfastness	ISO 105-B02, 6-7

* Test results available upon request

Details

Lead Time	3 - 6 weeks
Origin	Manufactured and assembled in the US
Warranty	Product: 20 years* Colorfastness: 20 years*

* Conditions apply

Environmental

Recycled Content	Minimum 60%
Energy	Generated using 40% solar energy
Indoor Air Quality	VOC less than/equal to 0.5mg/m ³
Recyclable	100%*
Certifications	Health Product Declaration (HPD)** Environmental Product Declaration Declare Certification - LBC Red List Free (third-party verified) SCS Global Indoor Advantage Gold

* PET is recyclable through participating partners

** HPD only applies to 12mm thickness



© The Health Product Declaration® logo is a registered trademark of HPD Collaborative.



For questions or additional product information, visit acoufelt.com or call 800.966.8557.

SoftenUp, Plateau Ceiling Frames | January 2026

Colorways

WOODGRAIN



Picket Fence
WQ01



Loft
WQ06



White Elm
WQ07



Lyed Larch
WQ30



White Oak
WQ13



Baltic Birch
WQ12



Knotty Spruce
WQ29



French Bobbin
WQ08



Boat Shed
WQ02



Nordic Plank
WQ15



Boardwalk
WQ10



Mocha Legno
WQ25



Mountain Lodge
WQ24



Wine Barrel
WQ03



Log Cabin
WQ04



Natural Oak
WQ16



Woodland Fog
WQ22



Driftwood
WQ21



Weathered Slate
WQ14



Petrified Ash
WQ23



Antique Chest
WQ11



European Larch
WQ17



Fumed Oak
WQ19



Teak
WQ18



Charred Larch
WQ09



Shadow Oak
WQ28



Barn Door
WQ05



Black Walnut
WQ20



Scorched Timber
WQ26



Espresso Oak
WQ27

Order samples at acoufelt.com/colorways

Colorways

PREMIER



White
WH12



Milkyway
MI74



Ivory
IV11



Pearl
PE21



Valentine
VA70



Quartz
QU67



Stonewash
ST72



Sea Salt
SE57



Platinum
PL04



Almond
AL55



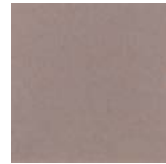
Pistachio
PI25



Turmeric
TU60



Flamingo
FL61



Amethyst
AM69



Periwinkle
PE23



Peacock
PE20



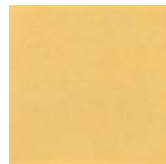
Metal
ME03



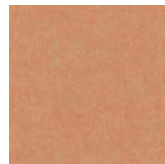
Mushroom
MU75



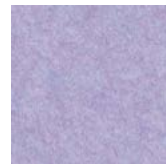
Celery
CE65



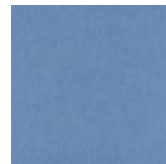
Wheat
WH68



Peach
PE19



Lilac
LI13



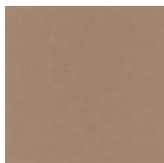
Marine
MA15



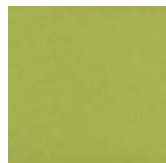
Sencha
SE58



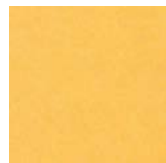
Grey
GR02



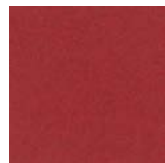
Umber
UM54



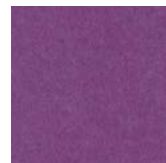
Wasabi
WA29



Popcorn
PO26



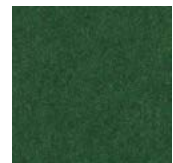
Currant
CU59



Berry
BE06



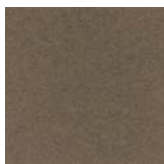
Azure
AZ05



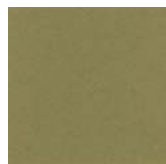
Oregano
OR18



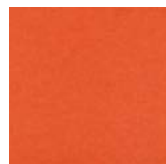
Charcoal
CH01



Walnut
WA56



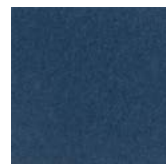
Eucalyptus
EU71



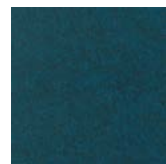
Carrot
CA08



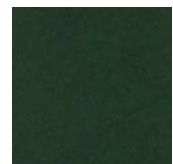
Loganberry
LO77



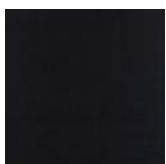
Granite
GR62



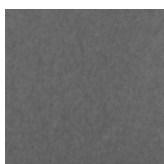
Denim
DE09



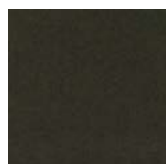
Kale
KA12



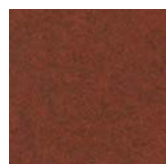
Piano Black
PI24



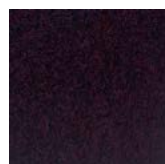
Slate
SL27



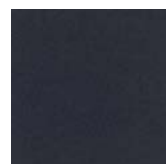
Nori
NO76



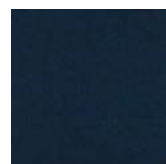
Peppercorn
PE22



Shiraz
SH63



Flint
FL64



Midnight
MI16

Order samples at acoufelt.com/colorways



For questions or additional product information,
visit acoufelt.com or call 800.966.8557.

SoftenUp, Plateau Ceiling Frames | January 2026

How to Specify

1. Choose Slat Size & Clearance

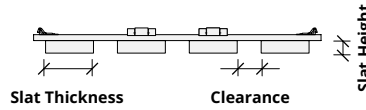
2. Choose Backer Panel Size

3. Choose Colorways

4. Optional Corner Panel

Slats are available in a range of thicknesses, heights, and clearances. Select the desired combination from the following:

Thickness	Height	Clearance
1"	1"	3"
1"	2"	2"
1"	2"	3"
1"	2"	3"
2"	1"	2"
2"	1"	3"
2"	2"	4"
3"	1"	3"
3"	2"	3"
4"	1"	2"
5"	1"	3"
5"	2"	3"



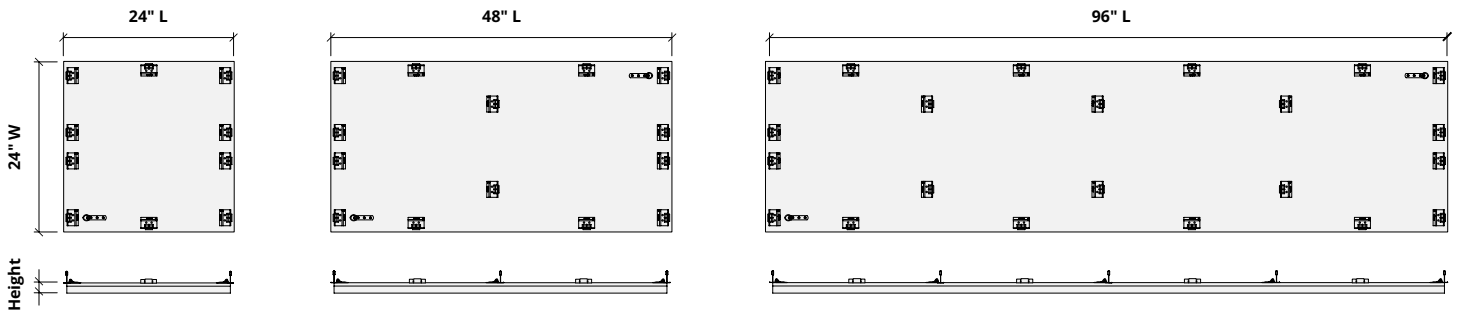
1. Choose Slat Size & Clearance

2. Choose Backer Panel Size

3. Choose Colorways

4. Optional Corner Panel

Backer panels are available in three lengths.



Clip spacing may differ. Product ships assembled.
Safety cable comes standard on all SoftenUp product lines. See installation guides for additional details.

1. Choose Slat Size & Clearance

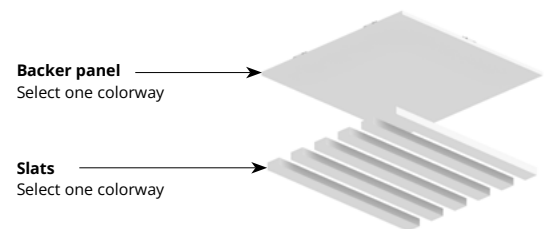
2. Choose Backer Panel Size

3. Choose Colorways

4. Optional Corner Panel

Select one colorway for your slats and one colorway for your backer panel. See colorway choices on page 3 and 4.

If you're specifying dark colored backer panels, we recommend dark drop ceiling grids (not provided).



For questions or additional product information, visit acoufelt.com or call 800.966.8557.

SoftenUp, Plateau Ceiling Frames | January 2026

How to Specify (cont.)

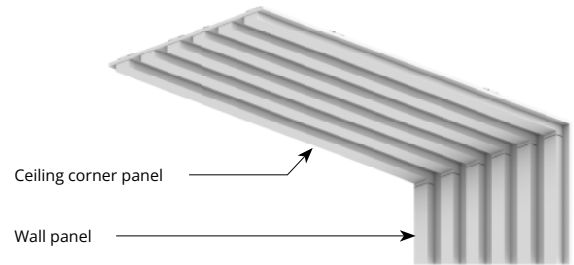
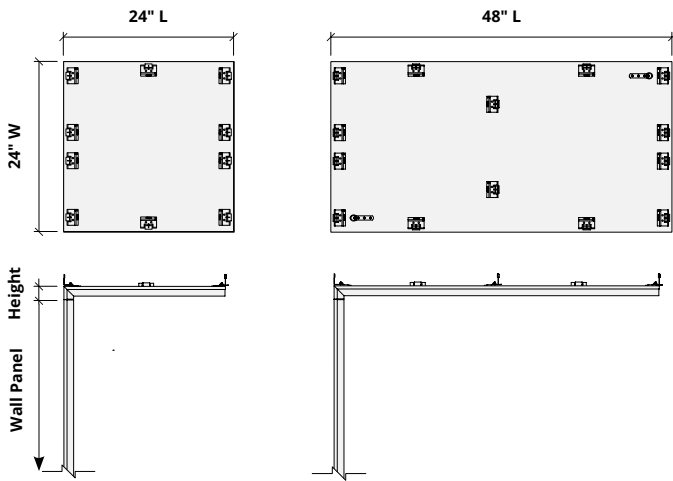
1. Choose Slat Size & Clearance

2. Choose Backer Panel Size

3. Choose Colorways

4. Optional Corner Panel

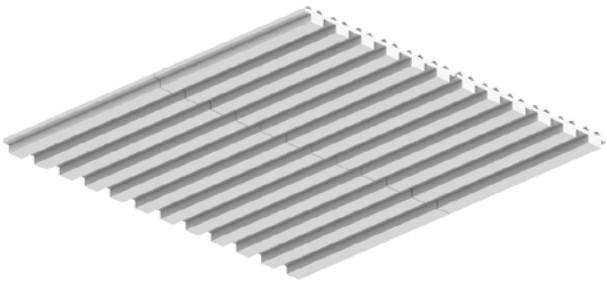
SoftenUp acoustical ceiling panels can be seamlessly integrated with corresponding wall panels by specifying the corresponding corner piece.



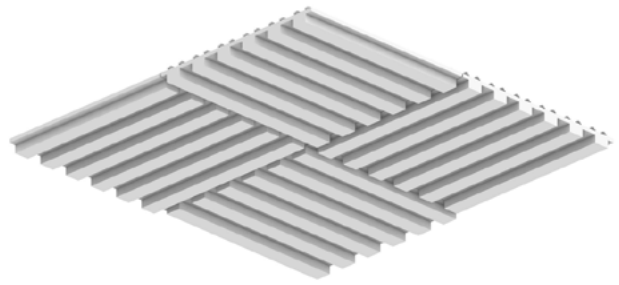
See corresponding SoftenUp™, Plateau wall panel specification sheet for additional information.

Recommended Layouts

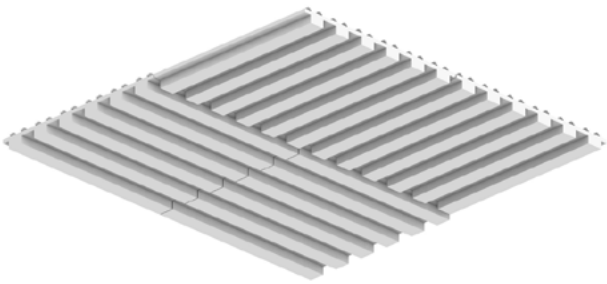
Layout 1



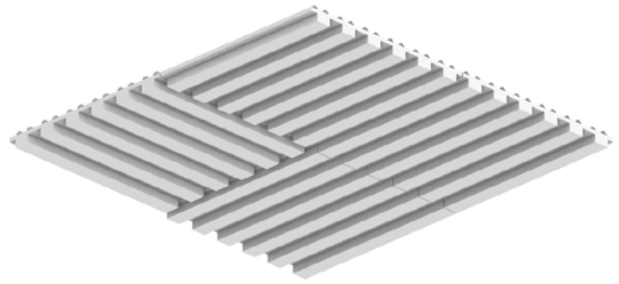
Layout 2



Layout 3

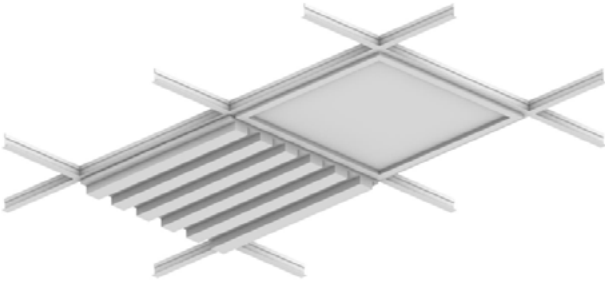


Layout 4

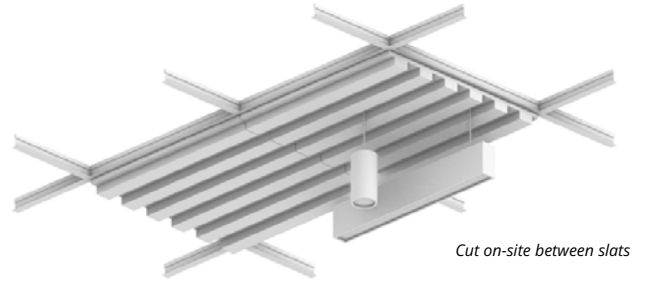


Lighting Coordination

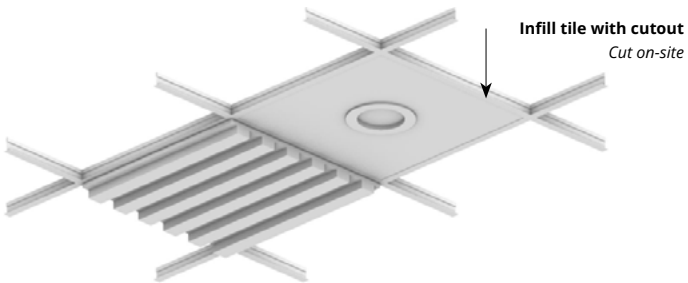
24" x 24", 24" x 48" Grid light



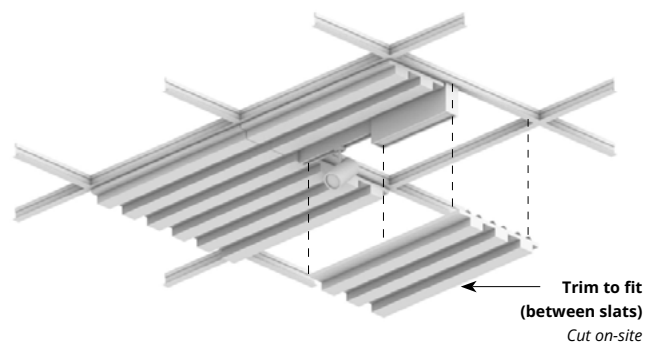
Drop pendant light



Recessed light

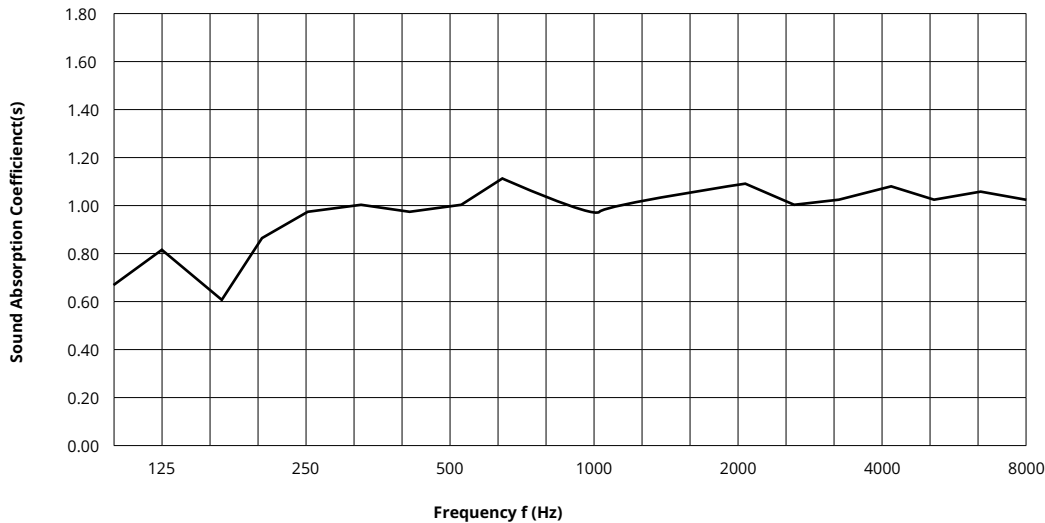


Grid mounted light (track, pendant)



Acoustic Performance

Test Method	ASTM E795
Install Method	Type E-400
Rating Method	ASTM C423
Mounting Method	2" T x 3" H slat on 12mm backer with 400mm air gap
Test Results	NRC 0.95 SAA 0.96




Frequency f (Hz)	125	250	500	1000	2000	4000	NRC
12mm	0.67	0.86	0.96	1.02	1.04	1.00	0.95

What is a Noise Reduction Coefficient (NRC)?

You'll find the NRC rating in the specifications of all of our products. This acronym stands for Noise Reduction Coefficient, and is expressed as a single number, a rating that describes the degree to which acoustic products can absorb sound.

You can use NRC values to understand the overall performance of our acoustic wall and ceiling products. The higher the NRC, the better the product is at soaking up the sound.

Performance Indices: Noise Reduction Coefficient (NRC) results represent the absorption coefficients measured at the one third octave bands at 125, 250, 500, 1000, 2000 and 4000 Hz rounded to the nearest 0.05. Acoustic testing has been performed according to the methods mentioned above. Customization of installation of the product could alter the results. Sound Absorption Average (SAA) indicates the absorption coefficient average for the twelve one-third octave bands ranging between 200 and 2500 Hz.

 For questions or additional product information, visit [acoufelt.com](https://www.acoufelt.com) or call **800.966.8557**.

SoftenUp, Plateau Ceiling Frames | January 2026

Suspension

The SoftenUp ceiling tiles are designed to connect to standard drop-ceiling grid systems via a series of tabs integrated into the design. No additional hardware is required for standard installation. Seismic zones may require additional considerations (see note on seismic).

Life Safety

The panels can be trimmed on-site, using a sharp utility knife, to accommodate any existing signage and/or wayfinding markings. Cut-outs must occur in 2" gap between slats. All fixtures must be supported independent of tiles.

** Panels cut on-site may require additional support.*

Weight

- 3"H slat weight = 2 lbs./sq. ft.
- 1"H slat weight = 1.25 lbs./sq. ft.

Clearance/Tolerance

When installed, SoftenUp tiles have a consistent 1/8" reveal to account for any on-site tolerance concerns. Panels have a method for tile alignment integrated into the design.

** A continuous slat design is available. Contact us for details.*

MEP/FP

The panels can be trimmed on-site, using a sharp utility knife, to accommodate any MEP/FP fixtures. These include, but are not limited to, drop-in lighting and diffusers, recessed lighting, linear diffusers, concealed and exposed fire sprinklers, and A/V equipment. Please consult all local and municipal codes, as well as a licensed engineer, for full compliance requirements. Cut-outs must occur in 2" gap between slats. All fixtures must be supported independent of tiles.

**Panels cut on-site may require additional support.*

Ceiling Access

Panels with an integrated folding access tab are available upon request. These folding tabs allow for the removal of individual tiles to access ceiling systems.

Seismic

SoftenUp ceiling tiles can provide seismic compliance through a mechanical direct screw attachment through the panel to the grid system, or an individual tile off to building structure. Please consult all local and municipal codes, as well as a licensed engineer, for full compliance requirements.