

## Vista, Box Ceiling Frames

Premier Collection

Vista, Box introduces bold, expansive geometry that elevates any space with a commanding, sculptural presence. The Box design offers a full 24x24 square option that transforms interiors into immersive experiences. This ceiling frame system brings both visual sophistication and acoustic balance to large areas. In galleries, performance venues, and corporate environments, from offices to conference rooms, Vista establishes rhythm and order while fostering acoustic calm, becoming an integral part of the architectural narrative.

## Specifications

<b>Surface</b>	Ceiling	
<b>Material</b>	FilaSorb™ polyester felt	
<b>Weight</b>	0.49 lb./ft <sup>2</sup> (±10%)	
<b>Standard Sizes</b>	<b>Height</b>	<b>Backer Panels</b>
	1, 3.75, 6.5" H	24" W x 24" L
<b>Compatible T-grid</b>	<b>Type</b>	<b>Layout</b>
	15/16" Flat	Standard 24" x 24"
	9/16" Flat	Standard 24" x 24"



Vista, Box Ceiling Frames in Milkyway

## Technical

<b>NRC Rating</b>	1.30*
<b>Fire Test</b>	ASTM E84, Class A CAN/ULC-S102 Flame spread index: 15 Smoke developed index: 200
<b>Water Sorption</b>	ASTM C1104-2019 (A Modified) Water sorbed by weight: 0.20% (based on a 12mm thick panel)
<b>Colorfastness</b>	ISO 105-B02, 6-7

\* Rating is estimated based on similar product designs. Comparison NRC results available upon request.

## Details

<b>Lead Time</b>	3 – 6 weeks
<b>Origin</b>	Manufactured and assembled in the US
<b>Warranty</b>	Product: 20 years* Colorfastness: 20 years*

\* Conditions apply

## Environmental

<b>Recycled Content</b>	Minimum 60%
<b>Energy</b>	Generated using 40% solar energy
<b>Indoor Air Quality</b>	VOC less than/equal to 0.5mg/m <sup>3</sup>
<b>Recyclable</b>	100%*
<b>Certifications</b>	Declare Certification - LBC Red List Free (third-party verified) SCS Global Indoor Advantage Gold

\* PET is recyclable through participating partners



For questions or additional product information, visit [acoufelt.com](https://www.acoufelt.com) or call 800.966.8557.

Vista, Box Ceiling Frames | January 2026

# Colorways

## PREMIER



White  
WH12



Milkyway  
MI74



Ivory  
IV11



Pearl  
PE21



Valentine  
VA70



Quartz  
QU67



Stonewash  
ST72



Sea Salt  
SE57



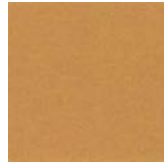
Platinum  
PL04



Almond  
AL55



Pistachio  
PI25



Turmeric  
TU60



Flamingo  
FL61



Amethyst  
AM69



Periwinkle  
PE23



Peacock  
PE20



Metal  
ME03



Mushroom  
MU75



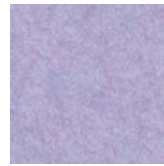
Celery  
CE65



Wheat  
WH68



Peach  
PE19



Lilac  
LI13



Marine  
MA15



Sencha  
SE58



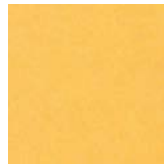
Grey  
GR02



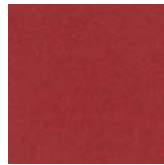
Umber  
UM54



Wasabi  
WA29



Popcorn  
PO26



Currant  
CU59



Berry  
BE06



Azure  
AZ05



Oregano  
OR18



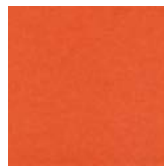
Charcoal  
CH01



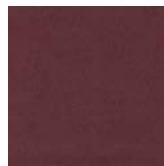
Walnut  
WA56



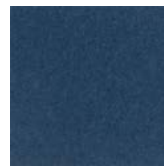
Eucalyptus  
EU71



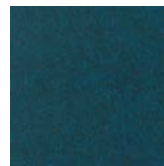
Carrot  
CA08



Loganberry  
LO77



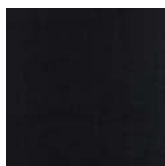
Granite  
GR62



Denim  
DE09



Kale  
KA12



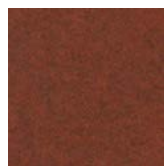
Piano Black  
PI24



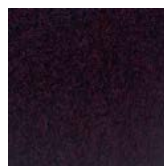
Slate  
SL27



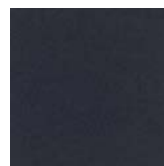
Nori  
NO76



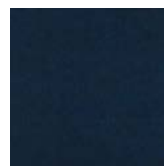
Peppercorn  
PE22



Shiraz  
SH63




Flint  
FL64



Midnight  
MI16

Order samples at [acoufelt.com/colorways](https://acoufelt.com/colorways)

 For questions or additional product information, visit [acoufelt.com](https://acoufelt.com) or call 800.966.8557.

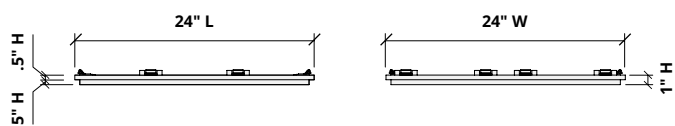
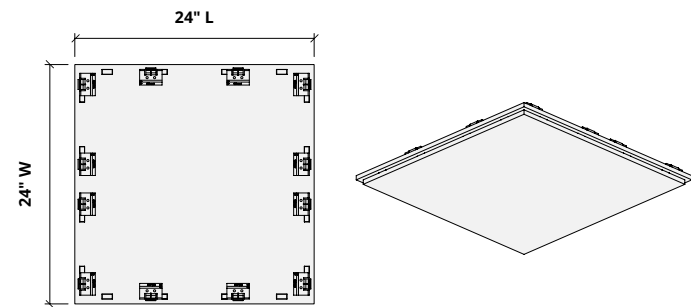
Vista, Box Ceiling Frames | January 2026

# Sizes

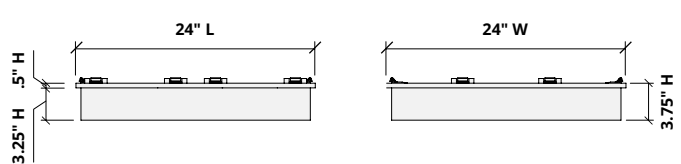
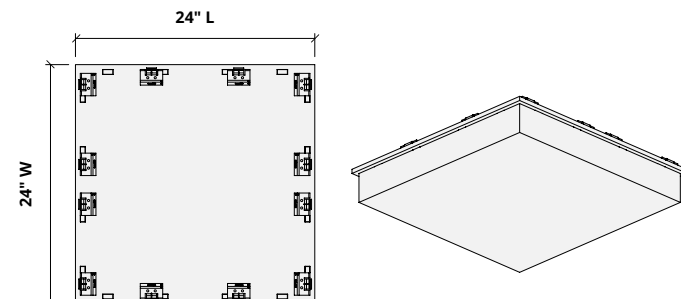
**Standard Heights** 1, 3.75, 6.5" H

**Standard Widths** 24" W

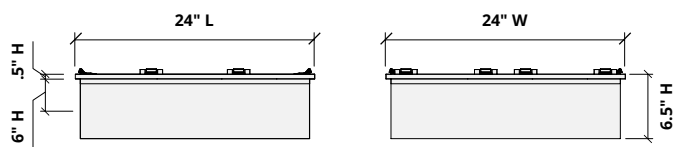
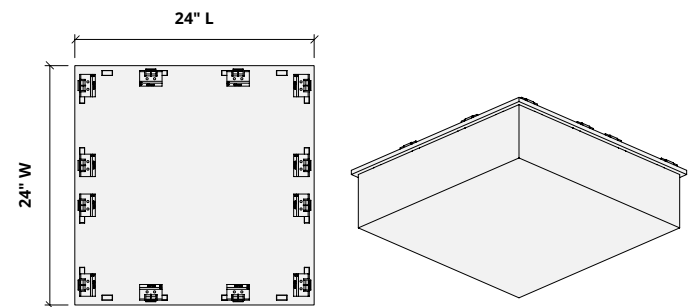
**Standard Length** 24" L



24" W x 24" L x 1" H



24" W x 24" L x 3.75" H

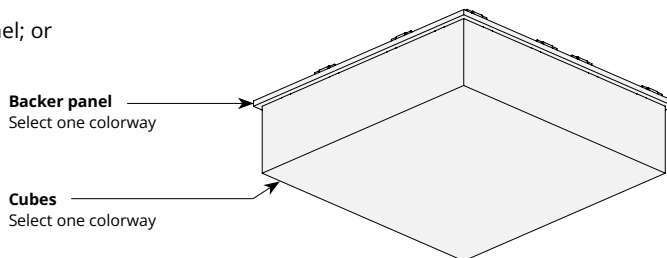


24" W x 24" L x 6.5" H

## Choose Colorways

Select one colorway for your cubes and one colorway for your backer panel; or one colorway for both. See colorway choices on page 3.

*If you're specifying dark colored backer panels, we recommend dark drop ceiling grids (not provided).*

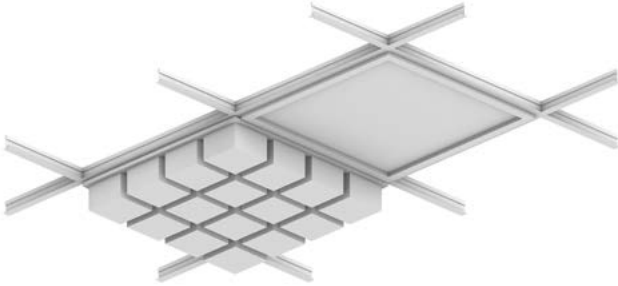


For questions or additional product information, visit [acoufelt.com](http://acoufelt.com) or call 800.966.8557.

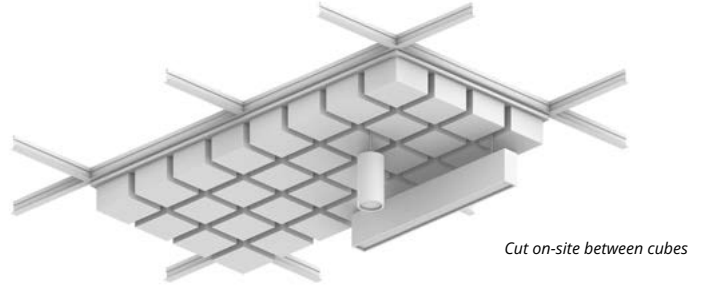
Vista, Box Ceiling Frames | January 2026

# Lighting Coordination

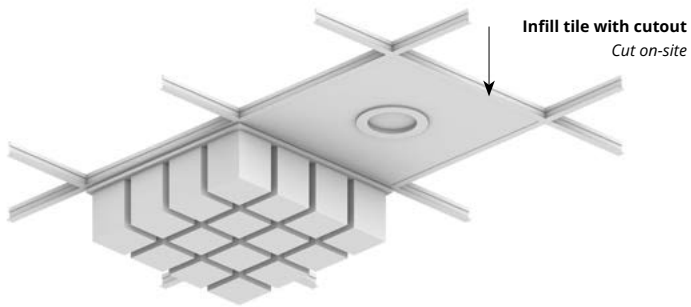
24" x 24", 24" x 48" Grid light



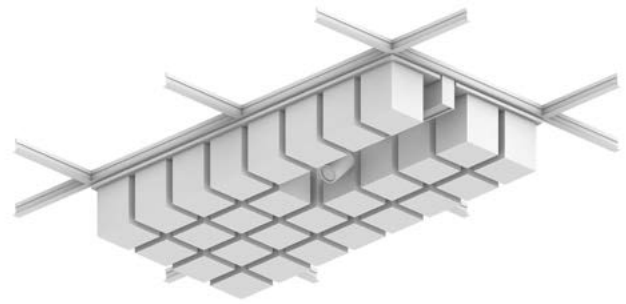
Drop pendant light



Recessed light

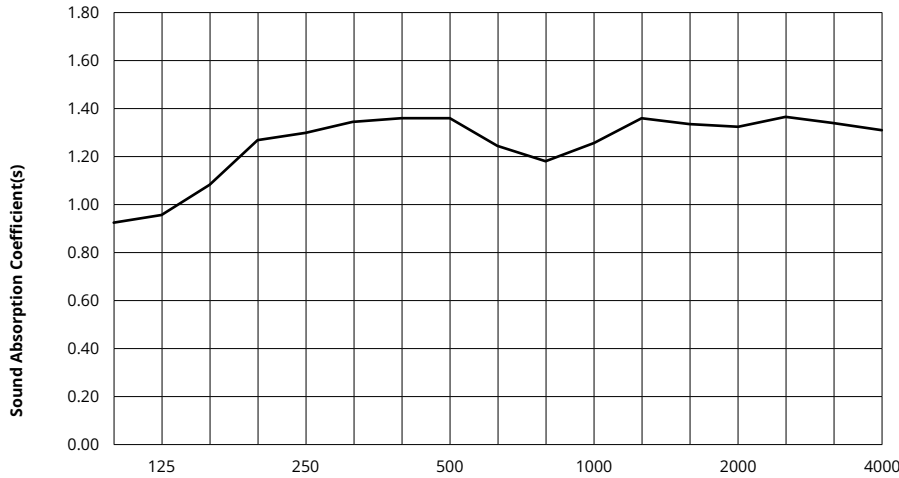


Grid mounted light (track, pendant)



# Acoustic Performance

<b>Test Method</b>	ASTM C423-23
<b>Mounting Method</b>	Type E-560
<b>Test Results</b>	NRC 1.30 SAA 1.30




Frequency f (Hz)	125	250	500	1000	2000	4000	NRC
12mm	0.98	1.27	1.35	1.24	1.33	1.33	1.30

## What is a Noise Reduction Coefficient (NRC)?

You'll find the NRC rating in the specifications of all of our products. This acronym stands for Noise Reduction Coefficient, and is expressed as a single number, a rating that describes the degree to which acoustic products can absorb sound.

You can use NRC values to understand the overall performance of our acoustic wall and ceiling products. The higher the NRC, the better the product is at soaking up the sound.

*Performance Indices: Noise Reduction Coefficient (NRC) results represent the absorption coefficients measured at the one third octave bands at 125, 250, 500, 1000, 2000 and 4000 Hz rounded to the nearest 0.05. Acoustic testing has been performed according to the methods mentioned above. Customization of installation of the product could alter the results. Sound Absorption Average (SAA) indicates the absorption coefficient average for the twelve one-third octave bands ranging between 200 and 2500 Hz.*

 For questions or additional product information, visit [acoufelt.com](https://www.acoufelt.com) or call **800.966.8557**.

Vista, Box Ceiling Frames | January 2026