

## SoftenUp, Ridge Ceiling Frames

WoodGrain Collection

SoftenUp™ modular ceiling frames add warmth and sophistication to any environment. The Ridge frames features a larger slat profile than its Plateau counterpart, offering a bold yet minimalist aesthetic. Designed for exceptional acoustic performance and seamless integration into standard T-grid drop-ceiling systems. Ridge frames are available in a range of sizes and woodgrain prints, giving you the freedom to create dynamic, customized ceiling designs.

## Specifications

<b>Surface</b>	Ceiling	
<b>Material</b>	FilaSorb™ polyester felt	
<b>Weight</b>	0.49 lb./ft <sup>2</sup> (±10%)	
<b>Standard Sizes</b>	<b>Height:</b> 3" up to 6" H <b>Thickness:</b> 1" up to 5" T <b>Backer Panels:</b> 24" W x 24" L 24" W x 48" L 24" W x 96" L	
<b>Compatible T-grid</b>	<b>Type</b>	<b>Layout</b>
	9/16" Flat	Standard 24" x 24"
	15/16" Flat	Standard 24" x 24"



SoftenUp, Ridge Ceiling Frames in Wine Barrel

## Technical

<b>NRC Rating</b>	0.95*
<b>Fire Test</b>	ASTM E84, Class A CAN/ULC-S102 Flame spread index: 15 Smoke developed index: 200
<b>Water Sorption</b>	ASTM C1104-2019 (A Modified) Water sorbed by weight: 0.20% (based on a 12mm thick panel)
<b>Colorfastness</b>	ISO 105-B02, 6-7

\* Test results available upon request

## Details

<b>Lead Time</b>	3 - 6 weeks
<b>Origin</b>	Manufactured and assembled in the US
<b>Warranty</b>	Product: 20 years* Colorfastness: 20 years*

\* Conditions apply

## Environmental

<b>Recycled Content</b>	Minimum 60%
<b>Energy</b>	Generated using 40% solar energy
<b>Indoor Air Quality</b>	VOC less than/equal to 0.5mg/m3
<b>Recyclable</b>	100%*
<b>Certifications</b>	Declare Certification - LBC Red List Free (third-party verified) SCS Global Indoor Advantage Gold

\* PET is recyclable through participating partners



For questions or additional product information, visit [acoufelt.com](https://www.acoufelt.com) or call 800.966.8557.

SoftenUp, Ridge Ceiling Frames | January 2026

# Colorways

## WOODGRAIN



Picket Fence  
WQ01



Loft  
WQ06



White Elm  
WQ07



Lyed Larch  
WQ30



White Oak  
WQ13



Baltic Birch  
WQ12



Knotty Spruce  
WQ29



French Bobbin  
WQ08



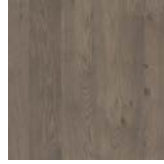
Boat Shed  
WQ02



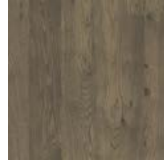
Nordic Plank  
WQ15



Boardwalk  
WQ10



Mocha Legno  
WQ25



Mountain Lodge  
WQ24



Wine Barrel  
WQ03



Log Cabin  
WQ04



Natural Oak  
WQ16



Woodland Fog  
WQ22



Driftwood  
WQ21



Weathered Slate  
WQ14



Petrified Ash  
WQ23



Antique Chest  
WQ11



European Larch  
WQ17



Fumed Oak  
WQ19



Teak  
WQ18



Charred Larch  
WQ09



Shadow Oak  
WQ28



Barn Door  
WQ05



Black Walnut  
WQ20



Scorched Timber  
WQ26



Espresso Oak  
WQ27

Order samples at [acoufelt.com/colorways](https://acoufelt.com/colorways)

# Colorways

## PREMIER



White  
WH12



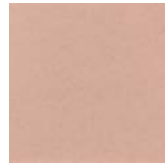
Milkyway  
MI74



Ivory  
IV11



Pearl  
PE21



Valentine  
VA70



Quartz  
QU67



Stonewash  
ST72



Sea Salt  
SE57



Platinum  
PL04



Almond  
AL55



Pistachio  
PI25



Turmeric  
TU60



Flamingo  
FL61



Amethyst  
AM69



Periwinkle  
PE23



Peacock  
PE20



Metal  
ME03



Mushroom  
MU75



Celery  
CE65



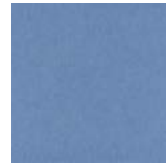
Wheat  
WH68



Peach  
PE19



Lilac  
LI13



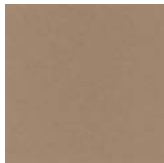
Marine  
MA15



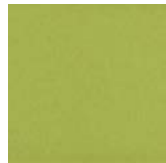
Sencha  
SE58



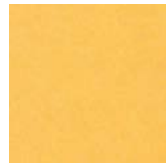
Grey  
GR02



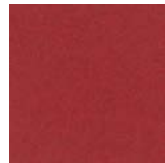
Umber  
UM54



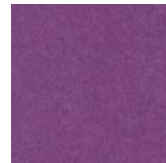
Wasabi  
WA29



Popcorn  
PO26



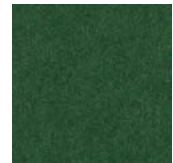
Currant  
CU59



Berry  
BE06



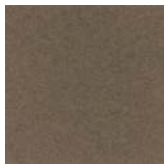
Azure  
AZ05



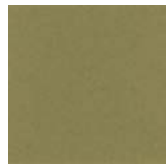
Oregano  
OR18



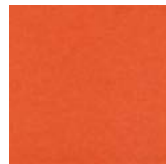
Charcoal  
CH01



Walnut  
WA56



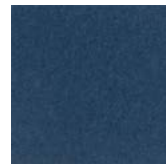
Eucalyptus  
EU71



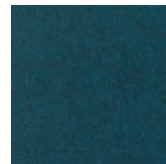
Carrot  
CA08



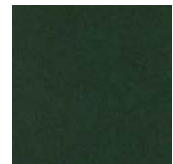
Loganberry  
LO77



Granite  
GR62



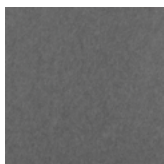
Denim  
DE09



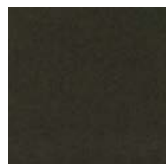
Kale  
KA12



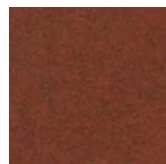
Piano Black  
PI24



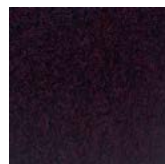
Slate  
SL27



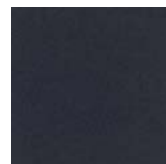
Nori  
NO76



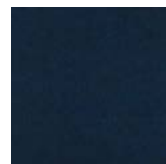
Peppercorn  
PE22



Shiraz  
SH63



Flint  
FL64



Midnight  
MI16

Order samples at [acoufelt.com/colorways](https://acoufelt.com/colorways)



For questions or additional product information,  
visit [acoufelt.com](https://acoufelt.com) or call **800.966.8557**.

SoftenUp, Ridge Ceiling Frames | January 2026

# How to Specify

## 1. Choose Slat Size & Clearance

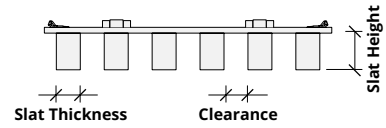
## 2. Choose Backer Panel Size

## 3. Choose Colorways

## 4. Optional Corner Panel

Slats are available in a range of thicknesses, heights, and clearances. Select the desired combination from the following:

Thickness	Height	Clearance	Thickness	Height	Clearance
1"	3"	2"	3"	3"	3"
1"	3"	3"	3"	4"	3"
1"	4"	2"	3"	5"	3"
1"	4"	3"	3"	6"	3"
1"	5"	2"	4"	3"	2"
1"	5"	3"	4"	4"	2"
1"	6"	2"	4"	5"	2"
1"	6"	3"	4"	6"	2"
2"	3"	2"	5"	3"	1"
2"	3"	4"	5"	3"	3"
2"	4"	2"	5"	4"	1"
2"	4"	4"	5"	4"	3"
2"	5"	2"	5"	5"	1"
2"	5"	4"	5"	5"	3"
2"	6"	2"	5"	6"	1"
2"	6"	4"	5"	6"	3"



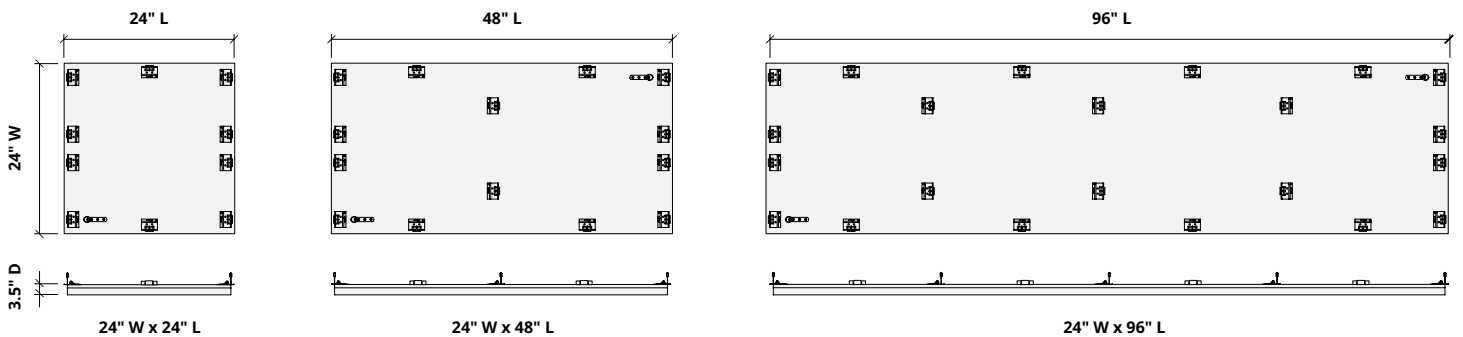
## 1. Choose Slat Size & Clearance

## 2. Choose Backer Panel Size


## 3. Choose Colorways

## 4. Optional Corner Panel

Backer panels are available in three lengths.



Clip spacing may differ. Product ships assembled.  
Safety cable comes standard on all SoftenUp™ product lines. See installation guides for additional details.

 For questions or additional product information, visit [acoufelt.com](http://acoufelt.com) or call 800.966.8557.

SoftenUp, Ridge Ceiling Frames | January 2026

# How to Specify (cont.)

## 1. Choose Slat Size

## 2. Choose Backer Panel Size

## 3. Choose Colorways

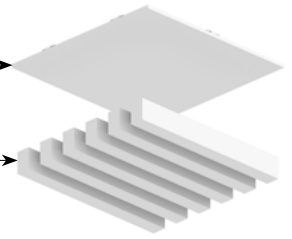
## 4. Optional Corner Panel

Select one colorway for your slats and one colorway for your backer panel.  
See colorway choices on pages 3 and 4.

*If you're specifying dark colored backer panels, we recommend dark drop ceiling grids (not provided).*

**Backer panel**  
Select one colorway

**Slats**  
Select one colorway



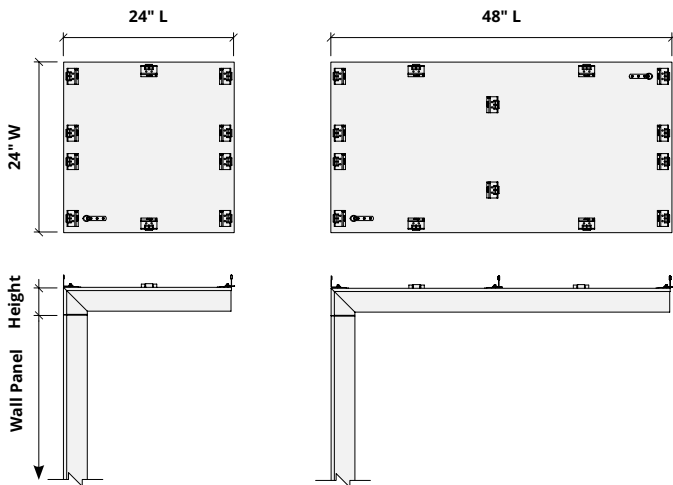
## 1. Choose Slat Size

## 2. Choose Backer Panel Size

## 3. Choose Colorways

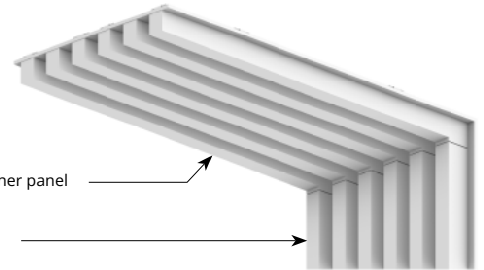
## 4. Optional Corner Panel

SoftenUp acoustical ceiling panels can be seamlessly integrated with corresponding wall panels by specifying the corresponding corner piece.



Ceiling corner panel

Wall panel



*See corresponding SoftenUp™, Ridge wall panel specification sheet for additional information.*

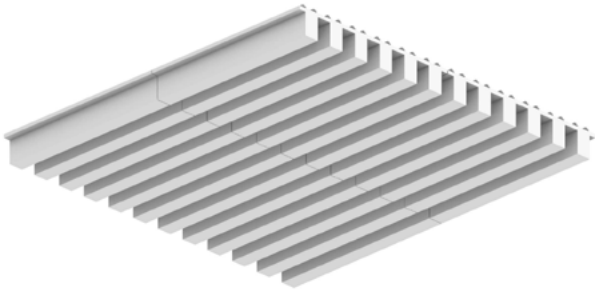


For questions or additional product information, visit [acoufelt.com](https://www.acoufelt.com) or call 800.966.8557.

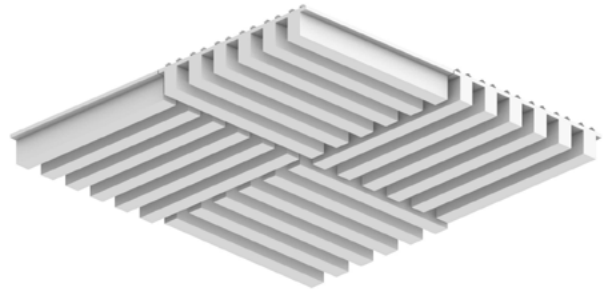
SoftenUp, Ridge Ceiling Frames | January 2026

# Recommended Layouts

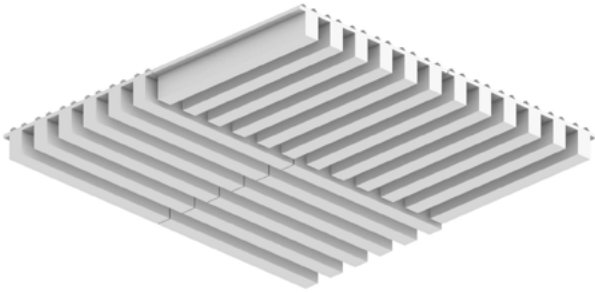
Layout 1



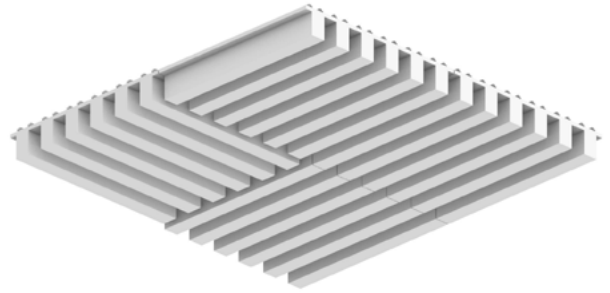
Layout 2



Layout 3

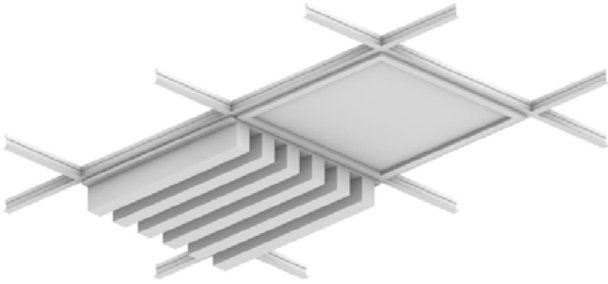


Layout 4

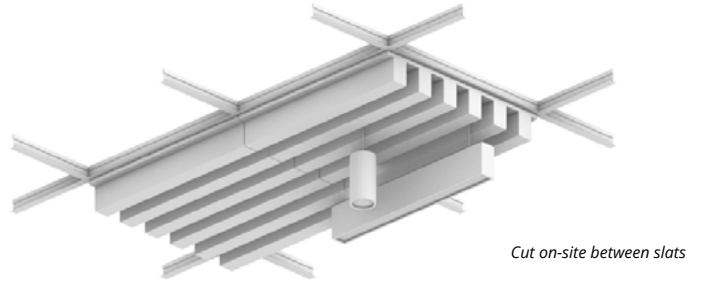


# Lighting Coordination

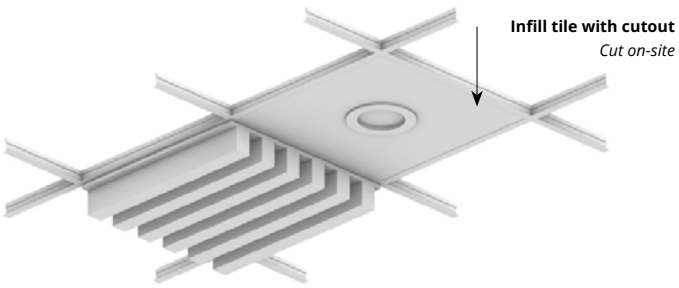
24" x 24", 24" x 48" Grid light



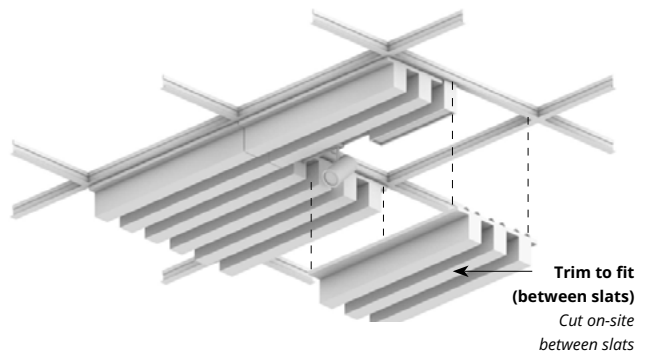
Drop pendant light



Recessed light

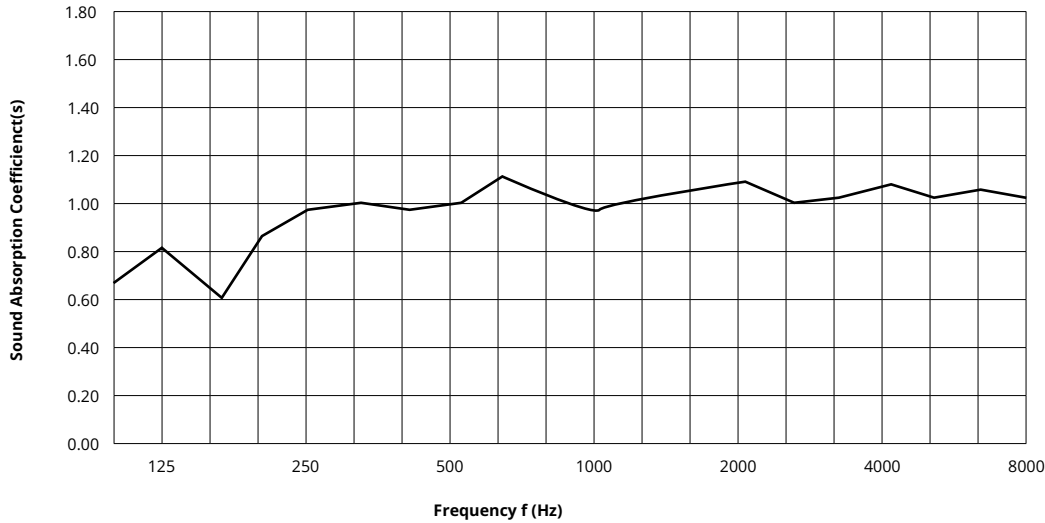


Grid mounted light (track, pendant)



# Acoustic Performance

<b>Test Method</b>	ASTM E795
<b>Install Method</b>	Type E-400
<b>Rating Method</b>	ASTM C423
<b>Mounting Method</b>	2" T x 3" H slat on 12mm backer with 400mm air gap
<b>Test Results</b>	NRC 0.95 SAA 0.96




Frequency f (Hz)	125	250	500	1000	2000	4000	NRC
12mm	0.67	0.86	0.96	1.02	1.04	1.00	0.95

## What is a Noise Reduction Coefficient (NRC)?

You'll find the NRC rating in the specifications of all of our products. This acronym stands for Noise Reduction Coefficient, and is expressed as a single number, a rating that describes the degree to which acoustic products can absorb sound.

You can use NRC values to understand the overall performance of our acoustic wall and ceiling products. The higher the NRC, the better the product is at soaking up the sound.

*Performance Indices: Noise Reduction Coefficient (NRC) results represent the absorption coefficients measured at the one third octave bands at 125, 250, 500, 1000, 2000 and 4000 Hz rounded to the nearest 0.05. Acoustic testing has been performed according to the methods mentioned above. Customization of installation of the product could alter the results. Sound Absorption Average (SAA) indicates the absorption coefficient average for the twelve one-third octave bands ranging between 200 and 2500 Hz.*

 For questions or additional product information, visit [acoufelt.com](https://www.acoufelt.com) or call **800.966.8557**.

SoftenUp, Ridge Ceiling Frames | January 2026

## Suspension

The SoftenUp ceiling tiles are designed to connect to standard drop-ceiling grid systems via a series of tabs integrated into the design. No additional hardware is required for standard installation. Seismic zones may require additional considerations (see note on seismic).

## Life Safety

The panels can be trimmed on-site, using a sharp utility knife, to accommodate any existing signage and/or wayfinding markings. Cut-outs must occur in 2" gap between slats. All fixtures must be supported independent of tiles.

*\* Panels cut on-site may require additional support.*

## Weight

- 3"H slat weight = 2 lbs./sq. ft.
- 1"H slat weight = 1.25 lbs./sq. ft.

## Clearance/Tolerance

When installed, SoftenUp tiles have a consistent 1/8" reveal to account for any on-site tolerance concerns. Panels have a method for tile alignment integrated into the design.

*\* A continuous slat design is available. Contact us for details.*

## MEP/FP

The panels can be trimmed on-site, using a sharp utility knife, to accommodate any MEP/FP fixtures. These include, but are not limited to, drop-in lighting and diffusers, recessed lighting, linear diffusers, concealed and exposed fire sprinklers, and A/V equipment. Please consult all local and municipal codes, as well as a licensed engineer, for full compliance requirements. Cut-outs must occur in 2" gap between slats. All fixtures must be supported independent of tiles.

*\*Panels cut on-site may require additional support.*

## Ceiling Access

Panels with an integrated folding access tab are available upon request. These folding tabs allow for the removal of individual tiles to access ceiling systems.

## Seismic

SoftenUp ceiling tiles can provide seismic compliance through a mechanical direct screw attachment through the panel to the grid system, or an individual tile off to building structure. Please consult all local and municipal codes, as well as a licensed engineer, for full compliance requirements.

