

## Recess, Cleft Ceiling Frames

WoodGrain Collection

Elevate any space with the rich texture, superior sound management, and refined visual appeal of Cleft ceiling frames. True to its name, Cleft features a distinct design that divides the interior of each cell into two, adding depth and dimension. Its lightweight construction allows for effortless installation, while a range of sizes and WoodGrain finishes provide exceptional design versatility.

## Specifications

<b>Surface</b>	Ceiling		
<b>Material</b>	FilaSorb™ polyester felt		
<b>Weight</b>	0.49 lb./ft <sup>2</sup> (±10%)		
<b>Standard Sizes</b>	<b>Thickness</b>	<b>Height</b>	<b>Width x Length</b>
	1" T	4, 6, 8" H	24" W x 24" L 48" W x 48" L
<b>Compatible T-grid</b>	<b>Type</b>	<b>Layout</b>	
	9/16" Flat	Standard 24" x 24"	
	15/16" Flat	Standard 48" x 48"	



Recess, Cleft Ceiling Frame in Natural Oak

## Technical

<b>NRC Rating</b>	Pending product testing
<b>Fire Test</b>	ASTM E84, Class A Flame spread index: 15 Smoke developed index: 200
<b>Water Sorption</b>	ASTM C1104-2019 (A Modified) Water sorbed by weight: 0.20% (based on a 12mm thick panel)
<b>Colorfastness</b>	ISO 105-B02, 6-7

## Details

<b>Lead Time</b>	3 – 6 weeks
<b>Origin</b>	Manufactured and assembled in the US
<b>Warranty</b>	Product: 20 years* Colorfastness: 20 years*

\* Conditions apply

## Environmental

<b>Recycled Content</b>	Minimum 60%
<b>Energy</b>	Generated using 40% solar energy
<b>Indoor Air Quality</b>	VOC less than/equal to 0.5mg/m <sup>3</sup>
<b>Recyclable</b>	100%*
<b>Certifications</b>	Declare Certification - LBC Red List Free (third-party verified) SCS Global Indoor Advantage Gold

\* PET is recyclable through participating partners



For questions or additional product information, visit [acoufelt.com](https://www.acoufelt.com) or call 800.966.8557.

Recess, Cleft Ceiling Frames | January 2026

# Colorways

## WOODGRAIN



Picket Fence  
WQ01



Loft  
WQ06



White Elm  
WQ07



Lyed Larch  
WQ30



White Oak  
WQ13



Baltic Birch  
WQ12



Knotty Spruce  
WQ29



French Bobbin  
WQ08



Boat Shed  
WQ02



Nordic Plank  
WQ15



Boardwalk  
WQ10



Mocha Legno  
WQ25



Mountain Lodge  
WQ24



Wine Barrel  
WQ03



Log Cabin  
WQ04



Natural Oak  
WQ16



Woodland Fog  
WQ22



Driftwood  
WQ21



Weathered Slate  
WQ14



Petrified Ash  
WQ23



Antique Chest  
WQ11



European Larch  
WQ17



Fumed Oak  
WQ19



Teak  
WQ18



Charred Larch  
WQ09



Shadow Oak  
WQ28



Barn Door  
WQ05



Black Walnut  
WQ20



Scorched Timber  
WQ26



Espresso Oak  
WQ27

Order samples at [acoufelt.com/colorways](https://acoufelt.com/colorways)

# Colorways

## PREMIER



White  
WH12



Milkyway  
MI74



Ivory  
IV11



Pearl  
PE21



Valentine  
VA70



Quartz  
QU67



Stonewash  
ST72



Sea Salt  
SE57



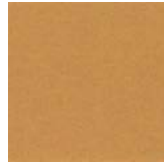
Platinum  
PL04



Almond  
AL55



Pistachio  
PI25



Turmeric  
TU60



Flamingo  
FL61



Amethyst  
AM69



Periwinkle  
PE23



Peacock  
PE20



Metal  
ME03



Mushroom  
MU75



Celery  
CE65



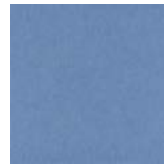
Wheat  
WH68



Peach  
PE19



Lilac  
LI13



Marine  
MA15



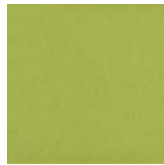
Sencha  
SE58



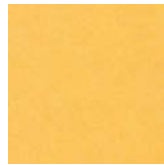
Grey  
GR02



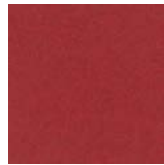
Umber  
UM54



Wasabi  
WA29



Popcorn  
PO26



Currant  
CU59



Berry  
BE06



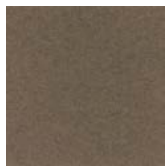
Azure  
AZ05



Oregano  
OR18



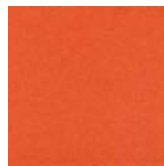
Charcoal  
CH01



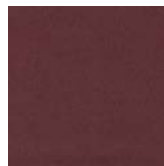
Walnut  
WA56



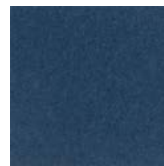
Eucalyptus  
EU71



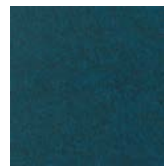
Carrot  
CA08



Loganberry  
LO77



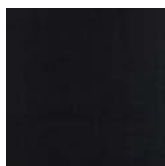
Granite  
GR62



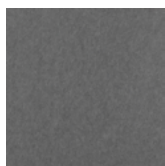
Denim  
DE09



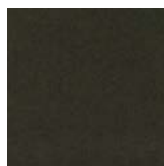
Kale  
KA12



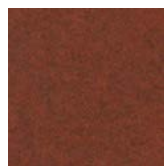
Piano Black  
PI24



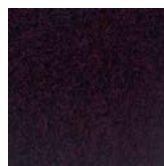
Slate  
SL27



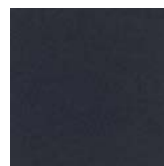
Nori  
NO76



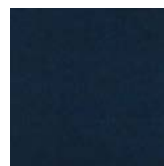
Peppercorn  
PE22



Shiraz  
SH63




Flint  
FL64



Midnight  
MI16

Order samples at [acoufelt.com/colorways](https://acoufelt.com/colorways)

 For questions or additional product information, visit [acoufelt.com](https://acoufelt.com) or call 800.966.8557.

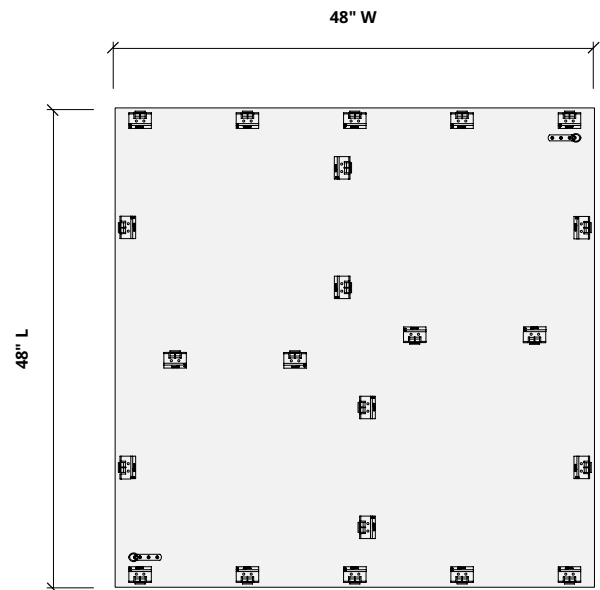
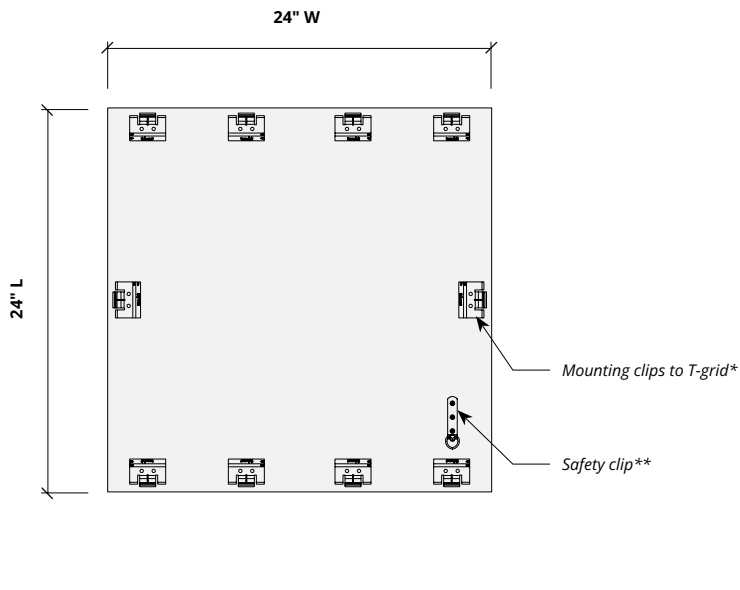
Recess, Cleft Ceiling Frames | January 2026

# Sizes

Standard Sizes	Thickness	Height	Width x Length
	1" T	4, 6, 8" H	24" W x 24" L 48" W x 48" L

Compatible T-grid	Type	Layout
	9/16" Flat	Standard 24" x 24"
	15/16" Flat	Standard 48" x 48"

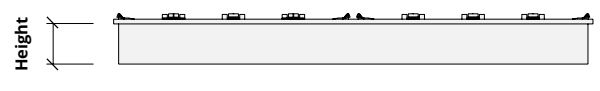
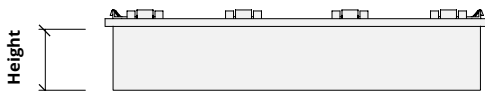
## Plans



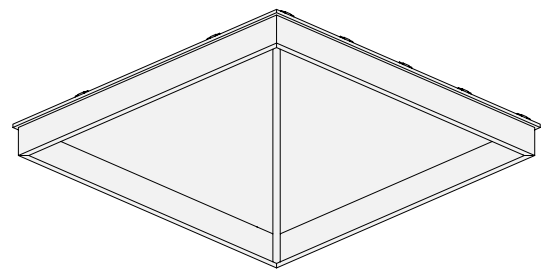
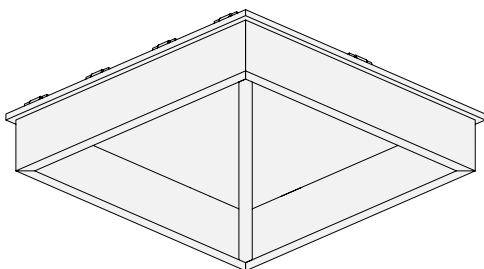
\*Clip spacing may differ. Product ships assembled.

\*\*Safety cable comes standard on all Recess product lines. See installation guides for additional details.

## Elevations



## Perspectives



# How to Specify

## 1. Choose Sizes

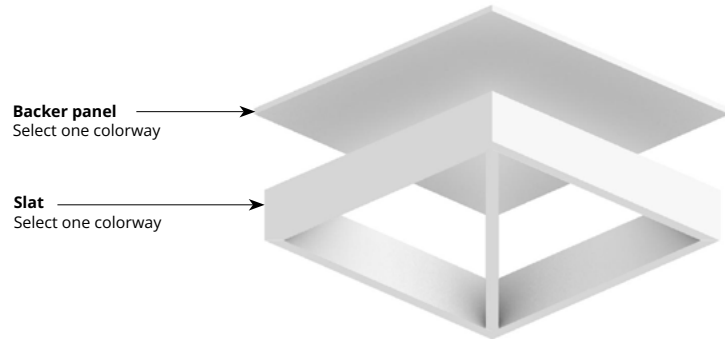
## 2. Choose Colorways

Select desired height and grid size.

## 1. Choose Sizes

## 2. Choose Colorway

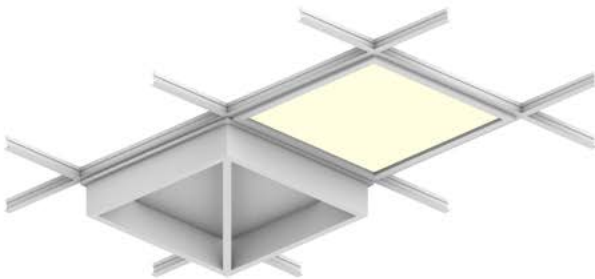
Select one colorway for your slats and one colorway for your backer panel, or one colorway for both. See pages 3 and 4 for colorways.



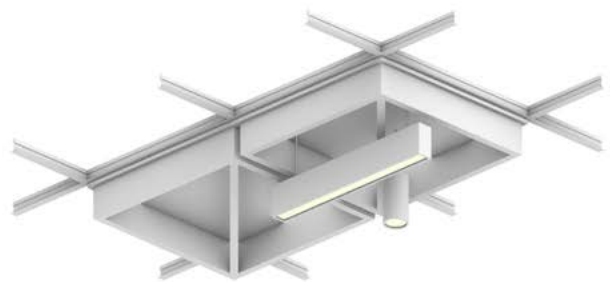
Product ships assembled.

# Lighting Coordination

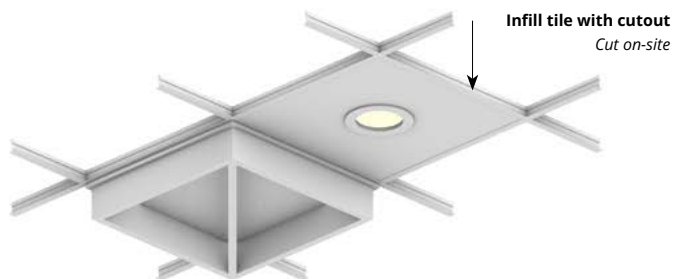
## 24" x 24", 24" x 48" Grid light



## Drop pendant light

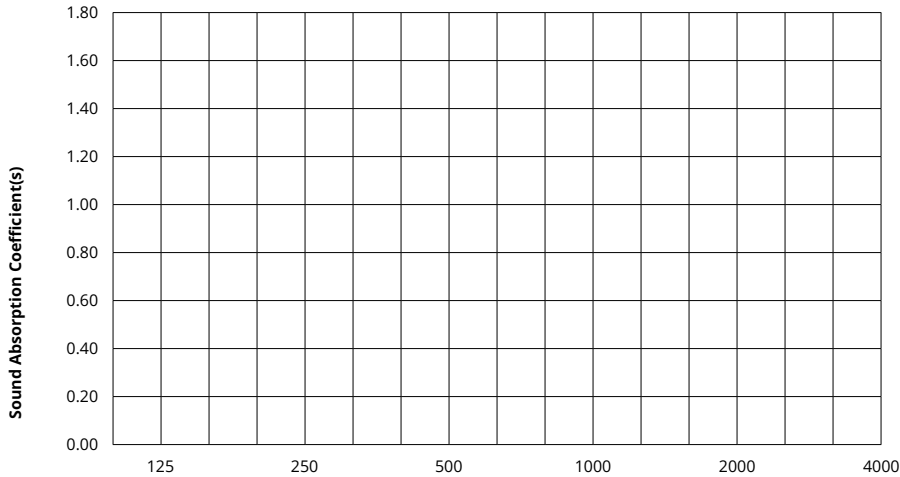


## Recessed light



# Acoustic Performance

<b>Test Method</b>	ASTM E795-16
<b>Install Method</b>	A
<b>Rating Method</b>	ISO 11654-1997
<b>Test Results</b>	Product testing in progress




	Frequency f (Hz)	125	250	500	1000	2000	4000	NRC

## What is a Noise Reduction Coefficient (NRC)?

You'll find the NRC rating in the specifications of all of our products. This acronym stands for Noise Reduction Coefficient, and is expressed as a single number, a rating that describes the degree to which acoustic products can absorb sound.

You can use NRC values to understand the overall performance of our acoustic wall and ceiling products. The higher the NRC, the better the product is at soaking up the sound.

*Performance Indices: Noise Reduction Coefficient (NRC) results represent the absorption coefficients measured at the one third octave bands at 125, 250, 500, 1000, 2000 and 4000 Hz rounded to the nearest 0.05. Acoustic testing has been performed according to the methods mentioned above. Customization of installation of the product could alter the results. Sound Absorption Average (SAA) indicates the absorption coefficient average for the twelve one-third octave bands ranging between 200 and 2500 Hz.*

 For questions or additional product information, visit [acoufelt.com](https://www.acoufelt.com) or call **800.966.8557**.

**Recess, Cleft Ceiling Frames** | January 2026