

Recess, Chamfer Ceiling Frames

WoodGrain Collection

Chamfer ceiling frames boast a sleek angled edge and a lightweight design, making them easy to install in any space. With a variety of sizes and an extensive selection of WoodGrain prints, they offer exceptional design versatility. Elevate any environment with enhanced texture, superior sound management, and striking visual appeal.

Specifications

Surface	Ceiling		
Material	FilaSorb™ polyester felt		
Weight	0.49 lb./ft ² (±10%)		
Standard Sizes	Thickness	Height	Width x Length
	1" T	4, 6, 8" H	24" W x 24" L 48" W x 48" L
Compatible T-grid	Type	Layout	
	9/16" Flat	Standard 24" x 24"	
	15/16" Flat	Standard 48" x 48"	



Recess, Chamfer Ceiling Frame in Fumed Oak

Technical

NRC Rating	Pending product testing
Fire Test	ASTM E84, Class A
	Flame spread index: 15
	Smoke developed index: 200
Water Sorption	ASTM C1104-2019 (A Modified) Water sorbed by weight: 0.20% (based on a 12mm thick panel)
Colorfastness	ISO 105-B02, 6-7

Details

Lead Time	3 – 6 weeks
Origin	Manufactured and assembled in the US
Warranty	Product: 20 years*
	Colorfastness: 20 years*

* Conditions apply

Environmental

Recycled Content	Minimum 60%
Energy	Generated using 40% solar energy
Indoor Air Quality	VOC less than/equal to 0.5mg/m ³
Recyclable	100%*
Certifications	Declare Certification - LBC Red List Free (third-party verified)
	SCS Global Indoor Advantage Gold

* PET is recyclable through participating partners



For questions or additional product information, visit [acoufelt.com](https://www.acoufelt.com) or call 800.966.8557.

Recess, Chamfer Ceiling Frames | January 2026

Colorways

WOODGRAIN



Picket Fence
WQ01



Loft
WQ06



White Elm
WQ07



Lyed Larch
WQ30



White Oak
WQ13



Baltic Birch
WQ12



Knotty Spruce
WQ29



French Bobbin
WQ08



Boat Shed
WQ02



Nordic Plank
WQ15



Boardwalk
WQ10



Mocha Legno
WQ25



Mountain Lodge
WQ24



Wine Barrel
WQ03



Log Cabin
WQ04



Natural Oak
WQ16



Woodland Fog
WQ22



Driftwood
WQ21



Weathered Slate
WQ14



Petrified Ash
WQ23



Antique Chest
WQ11



European Larch
WQ17



Fumed Oak
WQ19



Teak
WQ18



Charred Larch
WQ09



Shadow Oak
WQ28



Barn Door
WQ05



Black Walnut
WQ20



Scorched Timber
WQ26



Espresso Oak
WQ27

Order samples at acoufelt.com/colorways

Colorways

PREMIER



White
WH12



Milkyway
MI74



Ivory
IV11



Pearl
PE21



Valentine
VA70



Quartz
QU67



Stonewash
ST72



Sea Salt
SE57



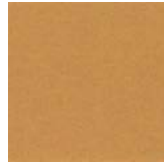
Platinum
PL04



Almond
AL55



Pistachio
PI25



Turmeric
TU60



Flamingo
FL61



Amethyst
AM69



Periwinkle
PE23



Peacock
PE20



Metal
ME03



Mushroom
MU75



Celery
CE65



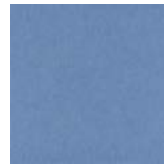
Wheat
WH68



Peach
PE19



Lilac
LI13



Marine
MA15



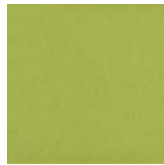
Sencha
SE58



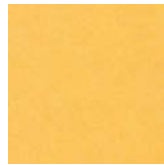
Grey
GR02



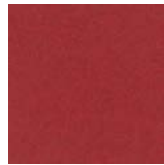
Umber
UM54



Wasabi
WA29



Popcorn
PO26



Currant
CU59



Berry
BE06



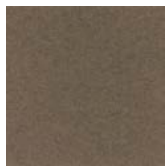
Azure
AZ05



Oregano
OR18



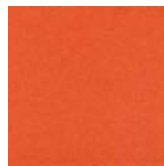
Charcoal
CH01



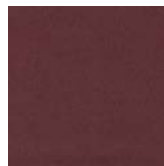
Walnut
WA56



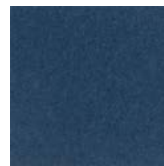
Eucalyptus
EU71



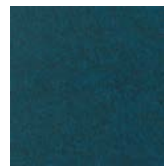
Carrot
CA08



Loganberry
LO77



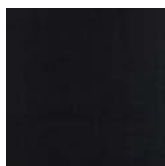
Granite
GR62



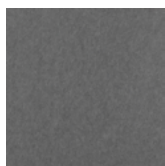
Denim
DE09



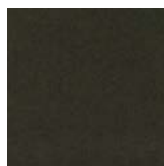
Kale
KA12



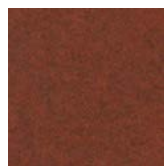
Piano Black
PI24



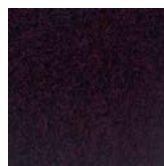
Slate
SL27



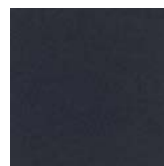
Nori
NO76



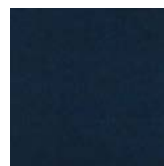
Peppercorn
PE22



Shiraz
SH63




Flint
FL64



Midnight
MI16

Order samples at acoufelt.com/colorways

 For questions or additional product information, visit acoufelt.com or call 800.966.8557.

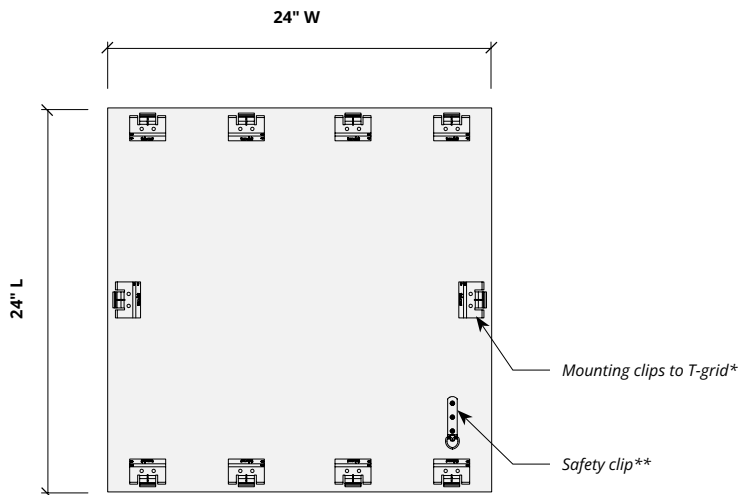
Recess, Chamfer Ceiling Frames | January 2026

Sizes

Standard Sizes	Thickness	Height	Width x Length
	1" T	4, 6, 8" H	24" W x 24" L 48" W x 48" L

Compatible T-grid	Type	Layout
	9/16" Flat	Standard 24" x 24"
	15/16" Flat	Standard 48" x 48"

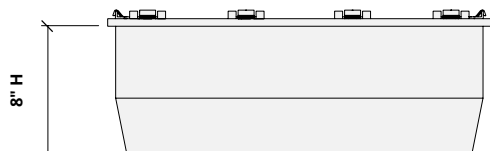
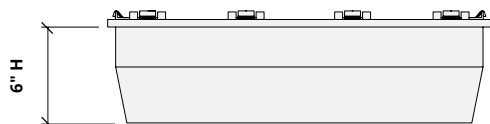
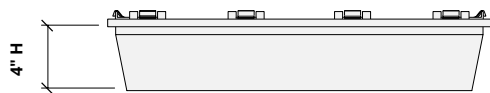
Plan



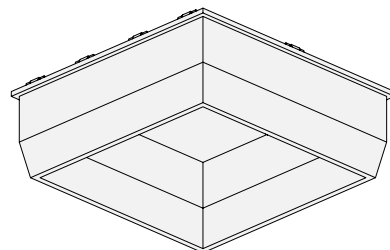
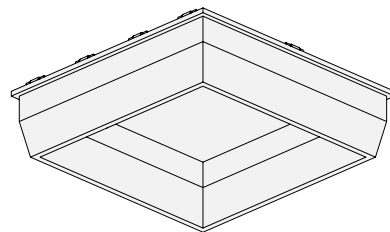
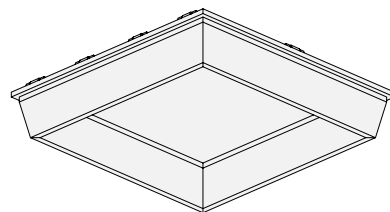
*Clip spacing may differ. Product ships assembled.


**Safety cable comes standard on all Recess product lines. See installation guides for additional details.

Elevations



Perspectives

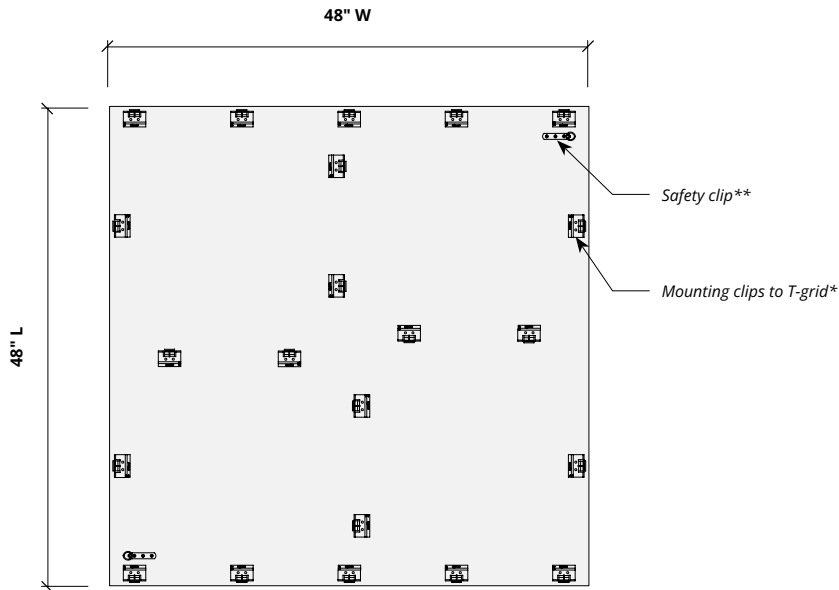


 For questions or additional product information, visit acoufelt.com or call 800.966.8557.

Recess, Chamfer Ceiling Frames | January 2026

Sizes (cont.)

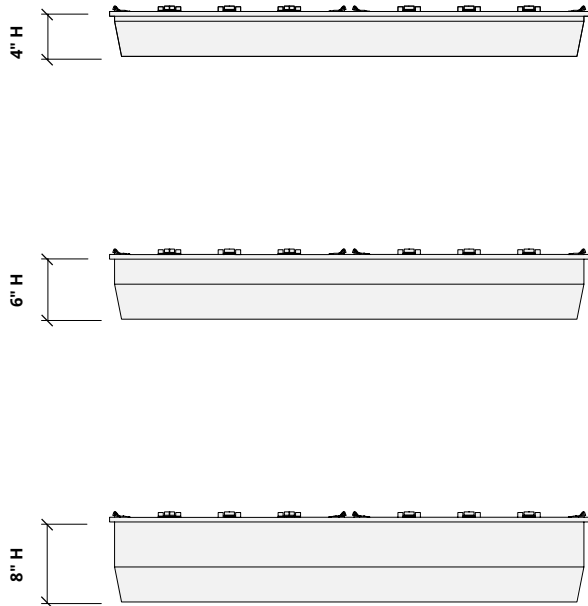
Plan



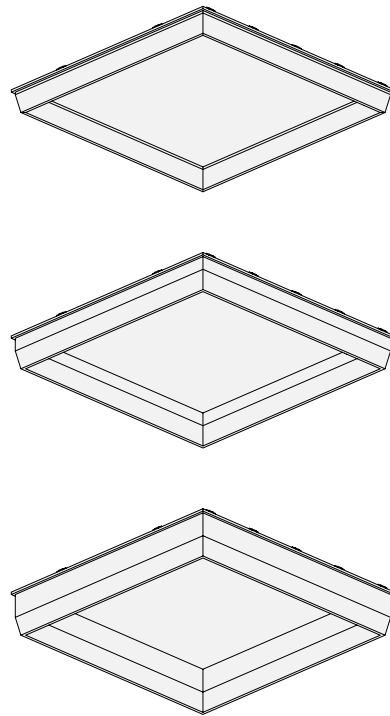
*Clip spacing may differ. Product ships assembled.

**Safety cable comes standard on all Recess product lines. See installation guides for additional details.

Elevations



Perspectives



How to Specify

1. Choose Sizes

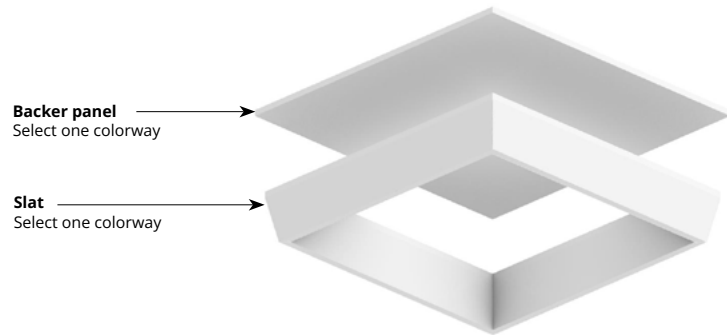
2. Choose Colorways

Select desired height and grid size.

1. Choose Sizes

2. Choose Colorway

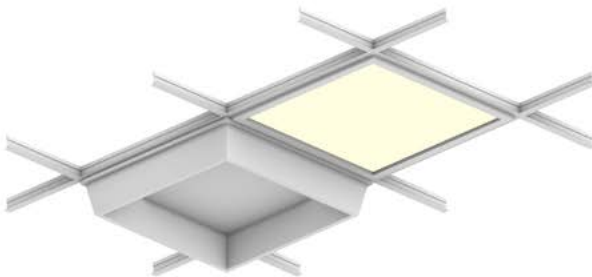
Select one colorway for your slats and one colorway for your backer panel, or one colorway for both. See pages 3 and 4 for colorways.



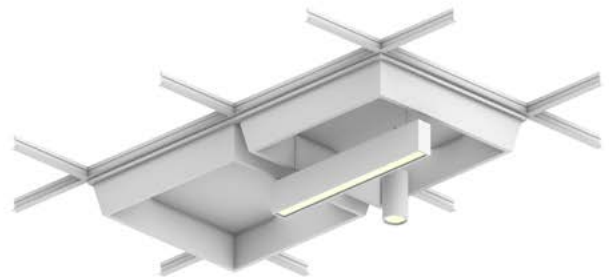
Product ships assembled.

Lighting Coordination

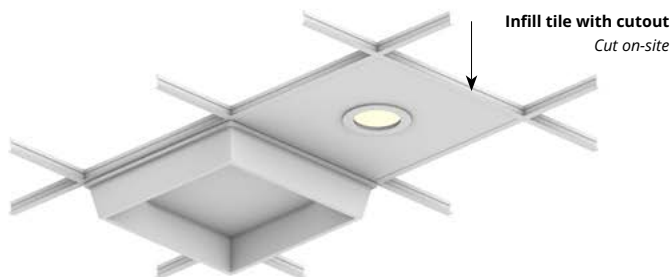
24" x 24", 24" x 48" Grid light



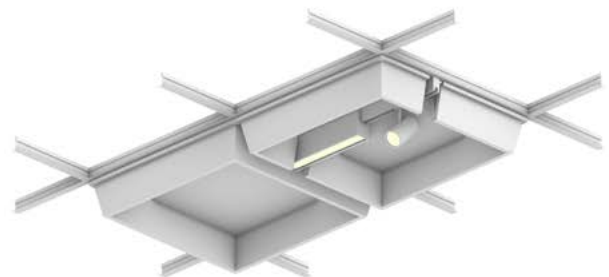
Drop pendant light



Recessed light



Grid mounted light (track, pendant)

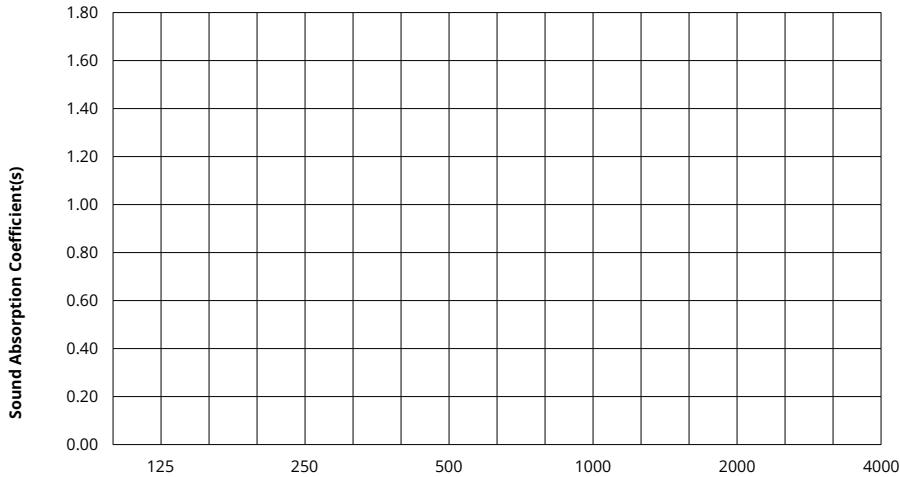


For questions or additional product information, visit [acoufelt.com](https://www.acoufelt.com) or call 800.966.8557.

Recess, Chamfer Ceiling Frames | January 2026

Acoustic Performance

Test Method	ASTM E795-16
Install Method	A
Rating Method	ISO 11654-1997
Test Results	Product testing in progress




	Frequency f (Hz)	125	250	500	1000	2000	4000	NRC

What is a Noise Reduction Coefficient (NRC)?

You'll find the NRC rating in the specifications of all of our products. This acronym stands for Noise Reduction Coefficient, and is expressed as a single number, a rating that describes the degree to which acoustic products can absorb sound.

You can use NRC values to understand the overall performance of our acoustic wall and ceiling products. The higher the NRC, the better the product is at soaking up the sound.

Performance Indices: Noise Reduction Coefficient (NRC) results represent the absorption coefficients measured at the one third octave bands at 125, 250, 500, 1000, 2000 and 4000 Hz rounded to the nearest 0.05. Acoustic testing has been performed according to the methods mentioned above. Customization of installation of the product could alter the results. Sound Absorption Average (SAA) indicates the absorption coefficient average for the twelve one-third octave bands ranging between 200 and 2500 Hz.

 For questions or additional product information, visit [acoufelt.com](https://www.acoufelt.com) or call **800.966.8557**.

Recess, Chamfer Ceiling Frames | January 2026