

Rooftop, Saltbox Ceiling Clouds

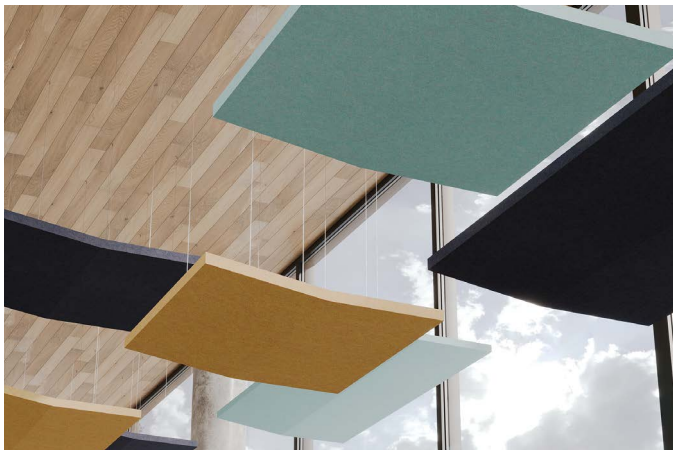
Premier Collection

Rooftop ceiling clouds combine modern aesthetics with exceptional functionality. Crafted from high-quality acoustic felt and available in a range of colors, their dynamic geometric design adds depth and visual intrigue to any space.

More than just visually captivating, Rooftop Clouds are designed with angled surfaces and premium materials to deliver outstanding sound absorption, effectively reducing noise and improving acoustics. Ideal for large, open areas, these ceiling clouds provide a versatile solution that enhances the style and functionality of any environment, making a bold architectural statement.

Specifications

Surface	Ceiling
Material	FilaSorb™ polyester felt
Thickness	1/2", 12mm (±10%)
Weight	0.49 lb./ft ² (±10%)
Standard Sizes	44" W x 44" L x 2" H 44" W x 96" L x 2" H



Rooftop, Saltbox Ceiling Cloud in Flint, Turmeric and Sea Salt

Technical

NRC Rating	0.85, 200mm air gap* 0.80, 400mm air gap*
Fire Test	ASTM E84, Class A Flame spread index: 15 Smoke developed index: 200
Water Sorption	ASTM C1104-2019 (A Modified) Water sorbed by weight: 0.20% (based on a 12mm thick panel)
Colorfastness	ISO 105-B02, 6-7

* Test results available upon request

Details

Lead Time	3 – 6 weeks
Origin	Manufactured and assembled in the US
Warranty	Product: 20 years* Colorfastness: 20 years*

* Conditions apply

Environmental

Recycled Content	Minimum 60%
Energy	Generated using 40% solar energy
Indoor Air Quality	VOC less than/equal to 0.5mg/m ³
Recyclable	100%*
Certifications	Declare Certification - LBC Red List Free (third-party verified) SCS Global Indoor Advantage Gold

* PET is recyclable through participating partners



For questions or additional product information, visit [acoufelt.com](https://www.acoufelt.com) or call **800.966.8557**.

Rooftop, Saltbox Ceiling Clouds | January 2026

Colorways

PREMIER



White
WH12



Milkyway
MI74



Ivory
IV11



Pearl
PE21



Valentine
VA70



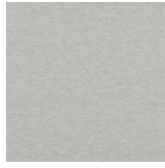
Quartz
QU67



Stonewash
ST72



Sea Salt
SE57



Platinum
PL04



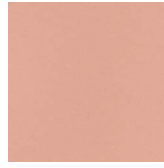
Almond
AL55



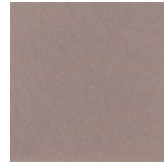
Pistachio
PI25



Turmeric
TU60



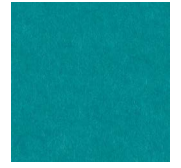
Flamingo
FL61



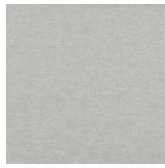
Amethyst
AM69



Periwinkle
PE23



Peacock
PE20



Metal
ME03



Mushroom
MU75



Celery
CE65



Wheat
WH68



Peach
PE19



Lilac
LI13



Marine
MA15



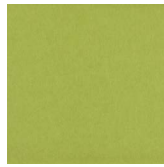
Sencha
SE58



Grey
GR02



Umber
UM54



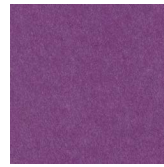
Wasabi
WA29



Popcorn
PO26



Currant
CU59



Berry
BE06



Azure
AZ05



Oregano
OR18



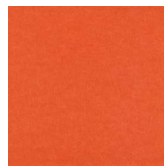
Charcoal
CH01



Walnut
WA56



Eucalyptus
EU71



Carrot
CA08



Loganberry
LO77



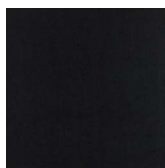
Granite
GR62



Denim
DE09



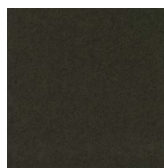
Kale
KA12



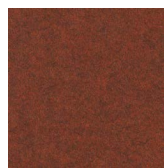
Piano Black
PI24



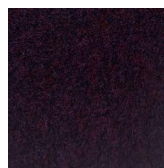
Slate
SL27



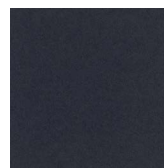
Nori
NO76



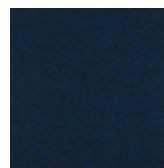
Peppercorn
PE22



Shiraz
SH63




Flint
FL64



Midnight
MI16

Order samples at acoufelt.com/colorways

 For questions or additional product information, visit acoufelt.com or call 800.966.8557.

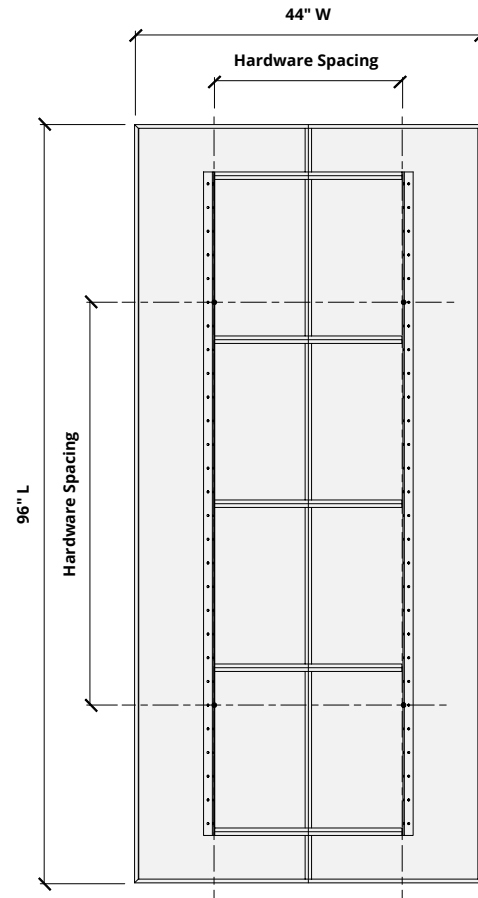
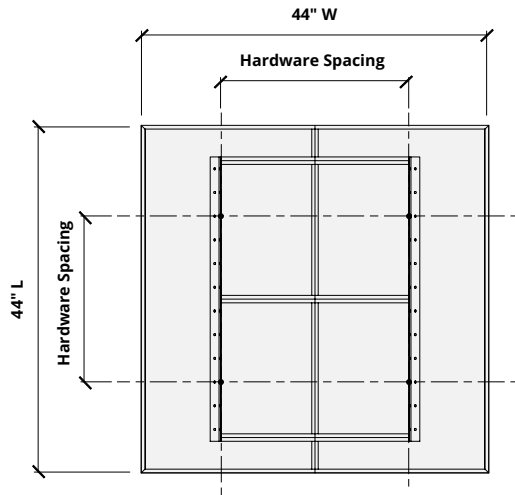
Rooftop, Saltbox Ceiling Clouds | January 2026

Sizes

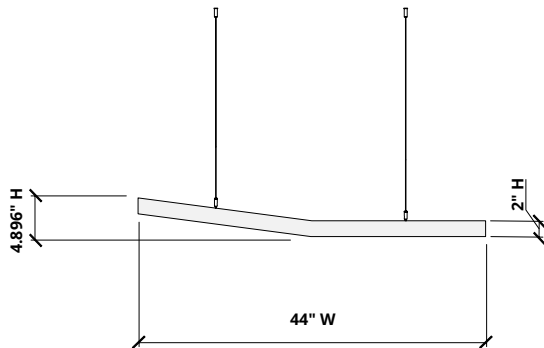
Standard Sizes 44" W x 44" L x 2" H
44" W x 96" L x 2" H

Thickness 1/2", 12mm (±10%)

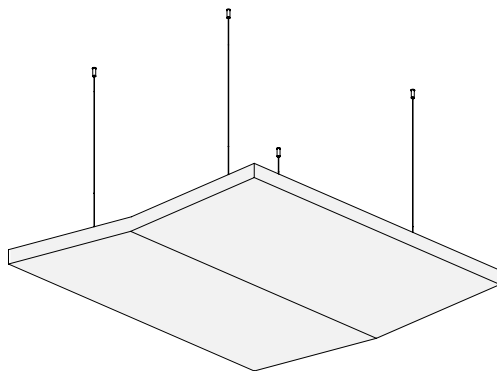
Plan



Elevation

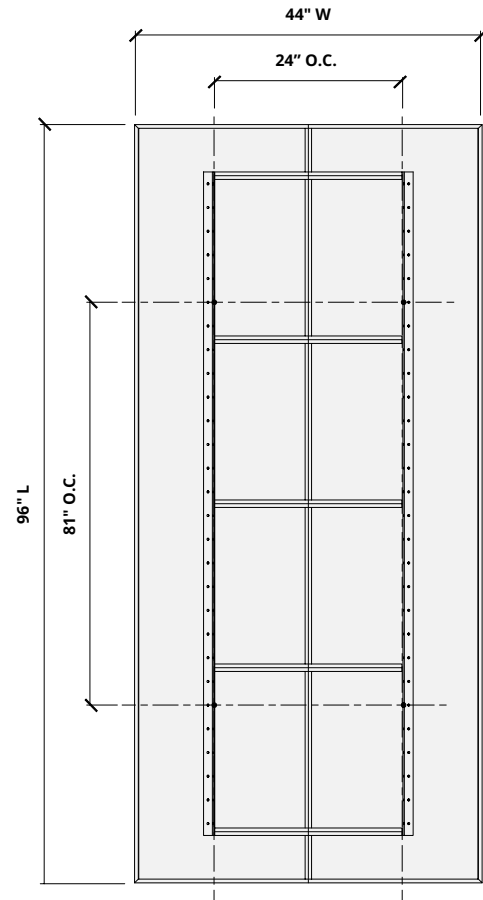
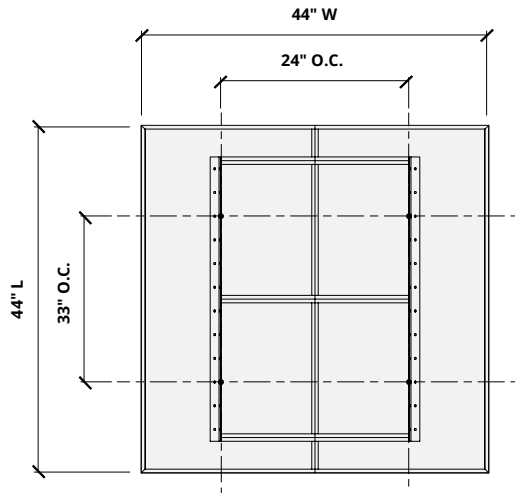


Perspective



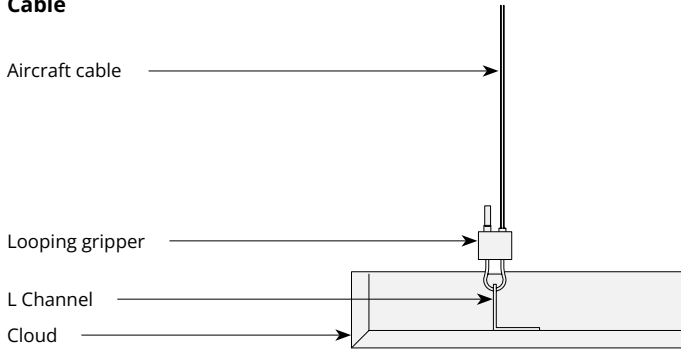
Hardware Spacing

44" W	24" on center spacing
44" L	33" on center spacing
96" L	81" on center spacing

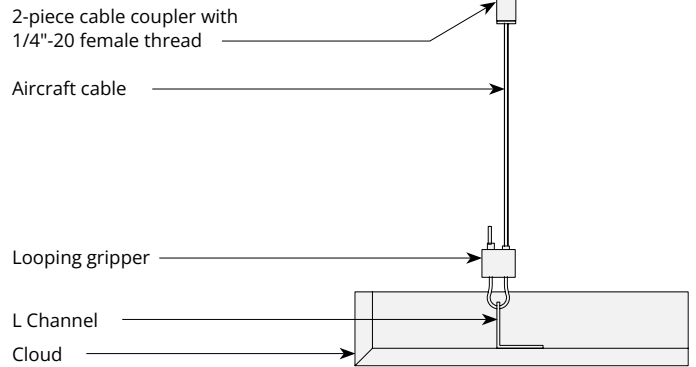


Mounting Methods

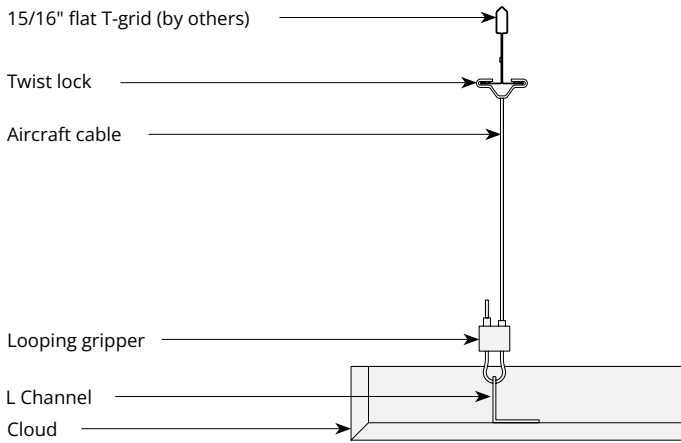
Cable



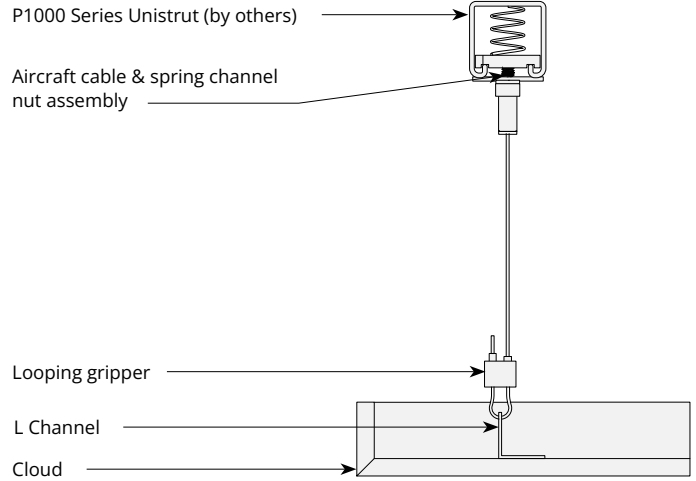
Cable to deck



Cable to T-grid

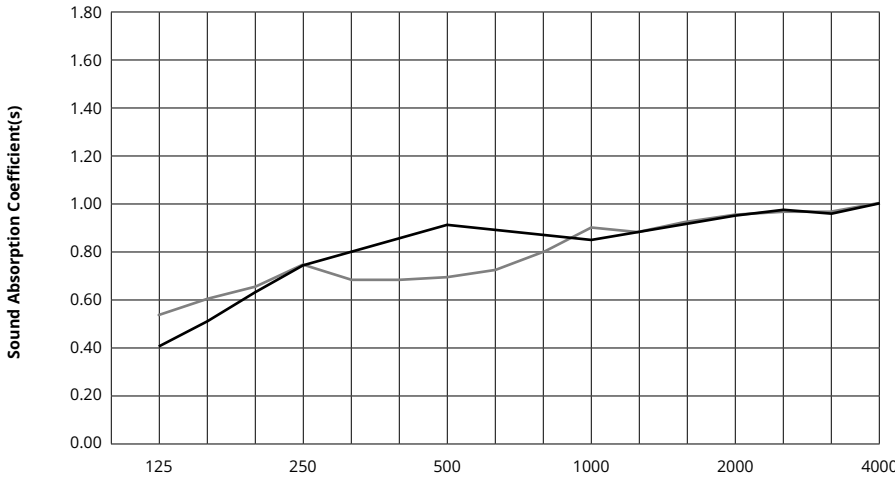


Cable to Unistrut



Acoustic Performance

Test Method	ISO 11654-2002
Install Method	E200, E400
Rating Method	ASTM C423-09a
Test Results	NRC 0.85, 200mm air gap SAA 0.86, 200mm air gap NRC 0.80, 400mm air gap SAA 0.83, 400mm air gap




	Frequency f (Hz)	125	250	500	1000	2000	4000	NRC
	12mm, 200mm air gap	0.40	0.75	0.90	0.85	0.95	1.00	0.85
	12mm, 400mm air gap	0.55	0.75	0.70	0.90	0.95	1.00	0.80

What is a Noise Reduction Coefficient (NRC)?

You'll find the NRC rating in the specifications of all of our products. This acronym stands for Noise Reduction Coefficient, and is expressed as a single number, a rating that describes the degree to which acoustic products can absorb sound.

You can use NRC values to understand the overall performance of our acoustic wall and ceiling products. The higher the NRC, the better the product is at soaking up the sound.

Performance Indices: Noise Reduction Coefficient (NRC) results represent the absorption coefficients measured at the one third octave bands at 125, 250, 500, 1000, 2000 and 4000 Hz rounded to the nearest 0.05. Acoustic testing has been performed according to the methods mentioned above. Customization of installation of the product could alter the results. Sound Absorption Average (SAA) indicates the absorption coefficient average for the twelve one-third octave bands ranging between 200 and 2500 Hz.

 For questions or additional product information, visit [acoufelt.com](https://www.acoufelt.com) or call **800.966.8557**.

Rooftop, Saltbox Ceiling Clouds | January 2026