

Cover, Concealed Ceiling Panels

Premier Collection

Concealed acoustic ceiling panels are beautifully simple in design, but the impact is anything but minimal. These high-quality panel covers are made of Premier Collection felt and installed beneath the drop ceiling grid to create a seamless finish. Available in a kaleidoscope of colors and woodgrain prints, Concealed covers are perfect for reducing noise levels in large areas with high footfall as well as smaller spaces where privacy and focus are key.

Specifications

Surface	Ceiling	
Material	FilaSorb™ polyester felt	
Weight	0.49 lb./ft ² (±10%) 0.98 lb./ft ² (±10%)	
Standard Sizes	Width	Length
	24" W	24", 48", 96" L
	48" W	48", 96" L



Cover, Concealed Ceiling Panel in Pearl

Technical

NRC Rating	12mm* 0.45, no air gap 0.85, 200mm air gap 24mm* 0.60, no air gap
Fire Test	ASTM E84, Class A CAN/ULC-S102 Flame spread index: 15 Smoke developed index: 200
Water Sorption	ASTM C1104-2019 (A Modified) Water sorbed by weight: 0.20% (based on a 12mm thick panel)
Colorfastness	ISO 105-B02, 6-7

* Test results available upon request

Details

Lead Time	3 – 6 weeks
Origin	Manufactured and assembled in the US
Warranty	Product: 20 years* Colorfastness: 20 years*

* Conditions apply

Environmental

Recycled Content	Minimum 60%
Energy	Generated using 40% solar energy
Indoor Air Quality	VOC less than/equal to 0.5mg/m3
Recyclable	100%*
Certifications	Health Product Declaration (HPD)** Declare Certification - LBC Red List Free (third-party verified) SCS Global Indoor Advantage Gold

* PET is recyclable through participating partners

** HPD only applies to 12mm thickness



*The Health Product Declaration logo is a registered trademark of HPD Collaborative.



For questions or additional product information, visit [acoufelt.com](https://www.acoufelt.com) or call **800.966.8557**.

Cover, Concealed Ceiling Panels | January 2026

Colorways

PREMIER



White
WH12



Milkyway
MI74



Ivory
IV11



Pearl
PE21



Valentine
VA70



Quartz
QU67



Stonewash
ST72



Sea Salt
SE57



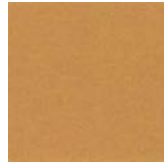
Platinum
PL04



Almond
AL55



Pistachio
PI25



Turmeric
TU60



Flamingo
FL61



Amethyst
AM69



Periwinkle
PE23



Peacock
PE20



Metal
ME03



Mushroom
MU75



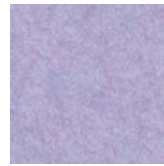
Celery
CE65



Wheat
WH68



Peach
PE19



Lilac
LI13



Marine
MA15



Sencha
SE58



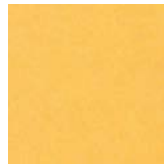
Grey
GR02



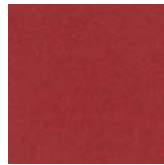
Umber
UM54



Wasabi
WA29



Popcorn
PO26



Currant
CU59



Berry
BE06



Azure
AZ05



Oregano
OR18



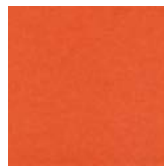
Charcoal
CH01



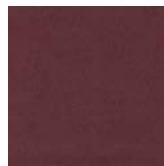
Walnut
WA56



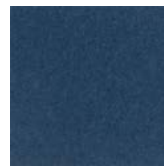
Eucalyptus
EU71



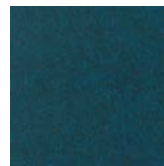
Carrot
CA08



Loganberry
LO77



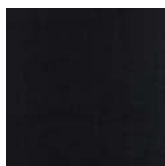
Granite
GR62



Denim
DE09



Kale
KA12



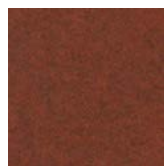
Piano Black
PI24



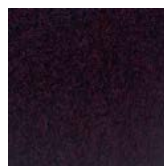
Slate
SL27



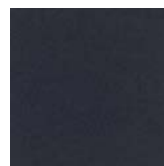
Nori
NO76



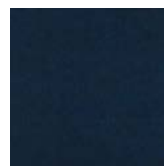
Peppercorn
PE22



Shiraz
SH63




Flint
FL64



Midnight
MI16

Order samples at acoufelt.com/colorways

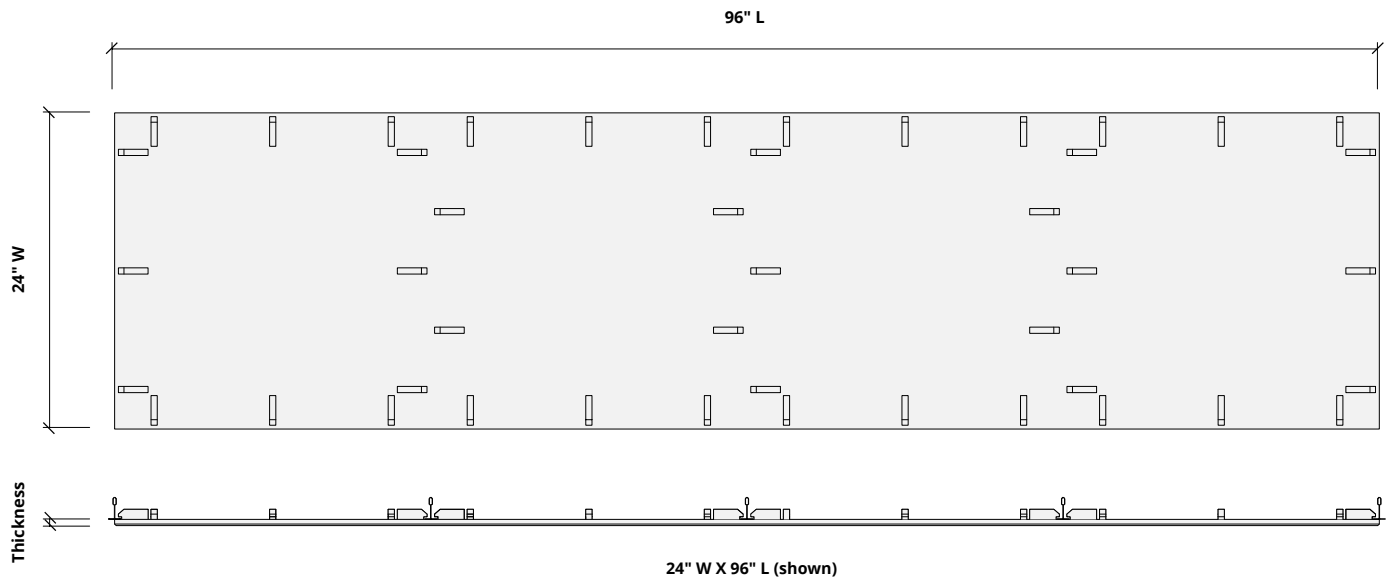
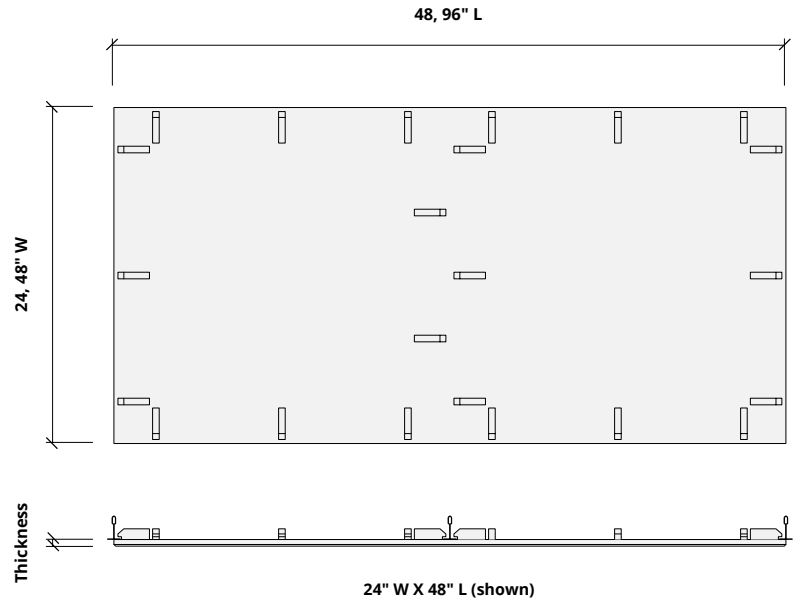
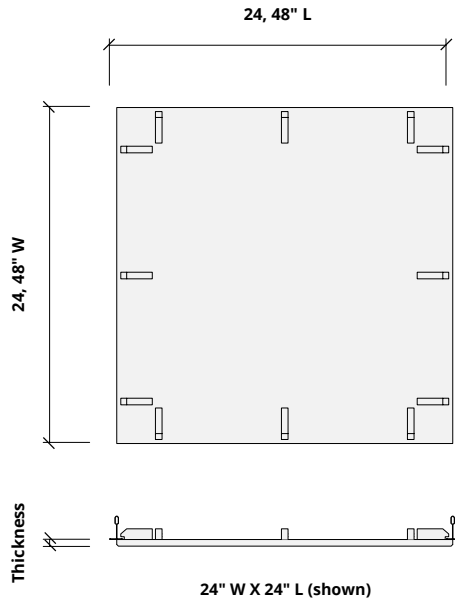
 For questions or additional product information, visit acoufelt.com or call 800.966.8557.

Cover, Concealed Ceiling Panels | January 2026


Sizes

Standard Widths 24, 48" W

Standard Length 24, 48, 96" L



Note: For construction adhesive mounting method, panels will have a flush surface.
 24" x 24" T-grid spacing is required.
 T-grid clips are not included; see mounting methods on page 5.

 For questions or additional product information, visit acoufelt.com or call 800.966.8557.

Cover, Concealed Ceiling Panels | January 2026

How to Specify

1. Choose Height

2. Choose Length

3. Choose Colorways

Select height: 24" or 48" H.

1. Choose Height

2. Choose Length

3. Choose Colorways

Concealed panels come in the standard lengths of: 24", 46" or 96" L.

1. Choose Height

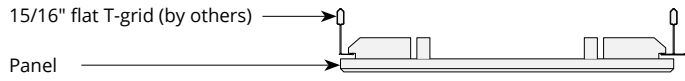
2. Choose Length

3. Choose Colorways

See colorway choices on page 3.

Mounting Methods

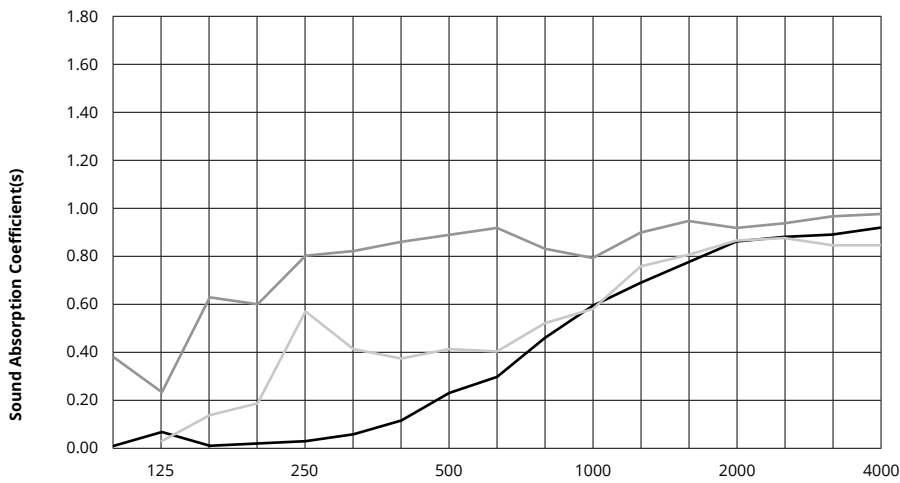
Direct to 15/16" T-grid



**24" x 24" T-grid spacing is required.*

Acoustic Performance

Test Method	ASTM E795-16
Install Method	A
Rating Method	ISO 11654-1997 acoustic – sound absorbers for use in buildings – rating of sound absorption
Mounting Method	No air gap
Test Results	<p>12mm 0.45, no air gap 0.85, 200mm air gap</p> <p>24mm 0.60, no air gap</p>




	Frequency f (Hz)	125	250	500	1000	2000	4000	NRC
	12mm	0.06	0.02	0.23	0.61	0.89	0.95	0.45
	12mm, 200mm air gap	0.22	0.81	0.90	0.80	0.93	0.99	0.85
	24mm	0.02	0.57	0.41	0.58	0.87	0.85	0.60

What is a Noise Reduction Coefficient (NRC)?

You'll find the NRC rating in the specifications of all of our products. This acronym stands for Noise Reduction Coefficient, and is expressed as a single number, a rating that describes the degree to which acoustic products can absorb sound.

You can use NRC values to understand the overall performance of our acoustic wall and ceiling products. The higher the NRC, the better the product is at soaking up the sound.

Performance Indices: Noise Reduction Coefficient (NRC) results represent the absorption coefficients measured at the one third octave bands at 125, 250, 500, 1000, 2000 and 4000 Hz rounded to the nearest 0.05. Acoustic testing has been performed according to the methods mentioned above. Customization of installation of the product could alter the results. Sound Absorption Average (SAA) indicates the absorption coefficient average for the twelve one-third octave bands ranging between 200 and 2500 Hz.

 For questions or additional product information, visit acoufelt.com or call **800.966.8557**.

Cover, Concealed Ceiling Panels | January 2026