

Cover, Staple Ceiling Panels

Premier Collection

Staple panels are simple in design but valuable in sound dampening in any space. Perfect for reducing noise levels in large areas as well as smaller spaces where privacy and focus are key. Available in two thickness and an array of solid colors, it's a perfect solution for spaces with a ceiling grid system.

Specifications

Surface	Ceiling
Material	FilaSorb™ polyester felt
Weight	0.49 lb./ft ² (±10%) 0.98 lb./ft ² (±10%)
Standard Sizes	24" W x 24" L 24" W x 48" L 48" W x 48" L



Cover, Staple Ceiling Panel in Pearl

Technical

NRC Rating	12mm* 0.45 24mm* 0.60
Fire Test	ASTM E84, Class A CAN/ULC-S102 Flame spread index: 15 Smoke developed index: 200
Water Sorption	ASTM C1104-2019 (A Modified) Water sorbed by weight: 0.20% (based on a 12mm thick panel)
Colorfastness	ISO 105-B02, 6-7

* Test results available upon request

Details

Lead Time	3 – 6 weeks
Origin	Manufactured and assembled in the US
Warranty	Product: 20 years* Colorfastness: 20 years*

* Conditions apply

Environmental

Recycled Content	Minimum 60%
Energy	Generated using 40% solar energy
Indoor Air Quality	VOC less than/equal to 0.5mg/m ³
Recyclable	100%*
Certifications	Health Product Declaration (HPD)** Environmental Product Declaration Declare Certification - LBC Red List Free (third-party verified) SCS Global Indoor Advantage Gold

* PET is recyclable through participating partners

** HPD only applies to 12mm thickness



® The Health Product Declaration® logo is a registered trademark of HPD Collaborative.



For questions or additional product information, visit acoufelt.com or call **800.966.8557**.

Cover, Staple Ceiling Panels | January 2026

Colorways

PREMIER



White
WH12



Milkyway
MI74



Ivory
IV11



Pearl
PE21



Valentine
VA70



Quartz
QU67



Stonewash
ST72



Sea Salt
SE57



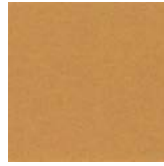
Platinum
PL04



Almond
AL55



Pistachio
PI25



Turmeric
TU60



Flamingo
FL61



Amethyst
AM69



Periwinkle
PE23



Peacock
PE20



Metal
ME03



Mushroom
MU75



Celery
CE65



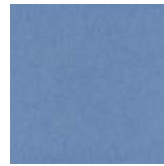
Wheat
WH68



Peach
PE19



Lilac
LI13



Marine
MA15



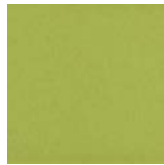
Sencha
SE58



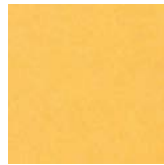
Grey
GR02



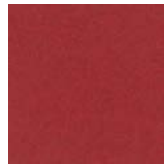
Umber
UM54



Wasabi
WA29



Popcorn
PO26



Currant
CU59



Berry
BE06



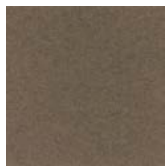
Azure
AZ05



Oregano
OR18



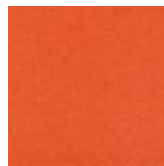
Charcoal
CH01



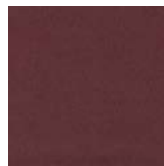
Walnut
WA56



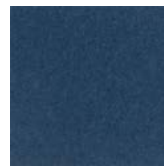
Eucalyptus
EU71



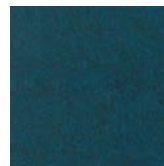
Carrot
CA08



Loganberry
LO77



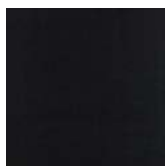
Granite
GR62



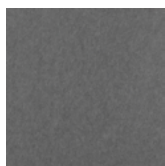
Denim
DE09



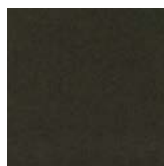
Kale
KA12



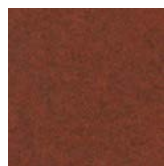
Piano Black
PI24



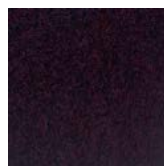
Slate
SL27



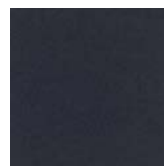
Nori
NO76



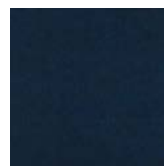
Peppercorn
PE22



Shiraz
SH63




Flint
FL64



Midnight
MI16

Order samples at acoufelt.com/colorways

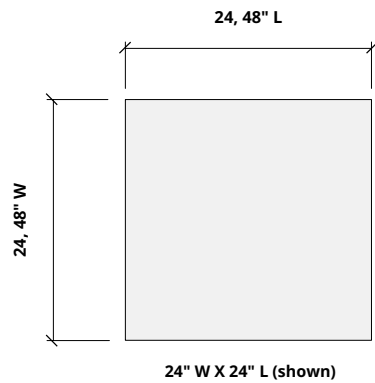
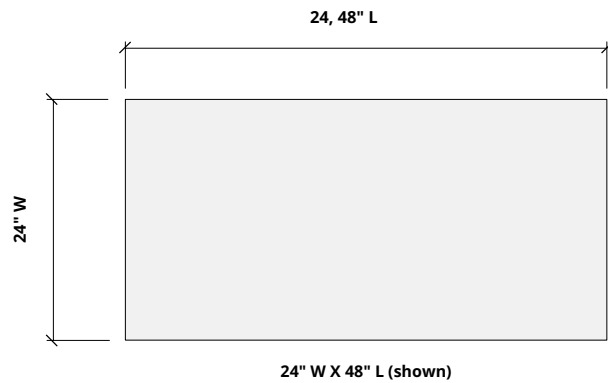
 For questions or additional product information, visit acoufelt.com or call 800.966.8557.

Cover, Staple Ceiling Panels | January 2026

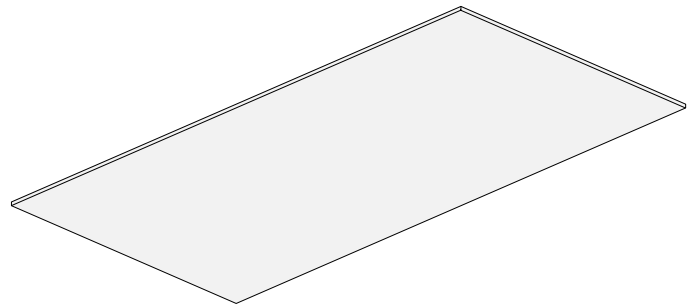
Sizes

Standard Sizes 24" W x 24" L
 24" W x 48" L
 48" W x 48" L

Plan



Perspective



**24" x 24" T-grid spacing is required.*



For questions or additional product information,
visit [acoufelt.com](https://www.acoufelt.com) or call **800.966.8557**.

Cover, Staple Ceiling Panels | January 2026

How to Specify

1. Choose Size

2. Choose Colorways

Staple is available in 24" W x 24" L, 24" W x 48" L, or 48" W x 48" L.

1. Choose Size

2. Choose Colorways

See colorway choices on page 3.

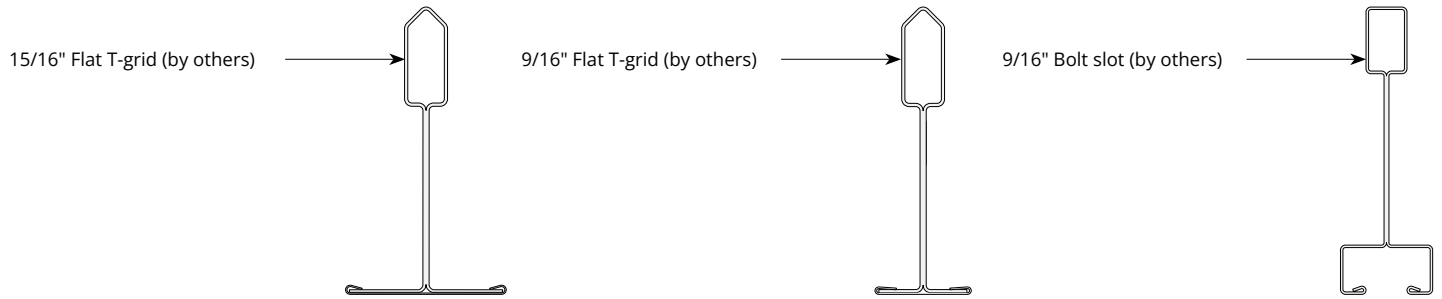


For questions or additional product information,
visit [acoufelt.com](https://www.acoufelt.com) or call **800.966.8557**.

Cover, Staple Ceiling Panels | January 2026

Mounting Methods

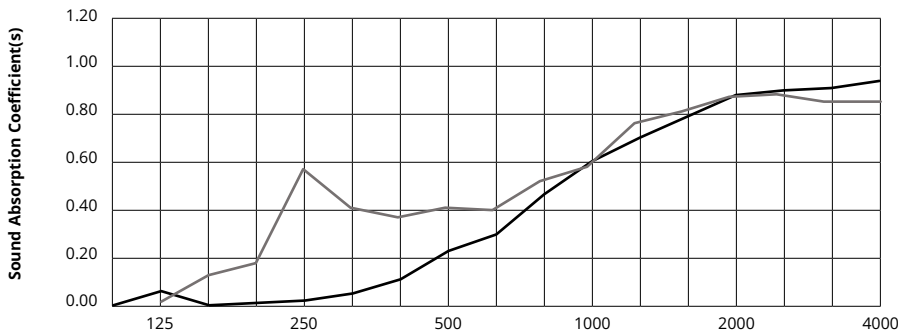
Compatible T-grid types



**24" x 24" T-grid spacing is required.*

Acoustic Performance

Test Method	ASTM C423-09a
Install Method	A
Rating Method	ISO 11654-2002
Test Results	12mm 0.45 24mm 0.60




Frequency f (Hz)	125	250	500	1000	2000	4000	NRC
12mm	0.06	0.02	0.23	0.61	0.89	0.95	0.45
24mm	0.02	0.57	0.41	0.58	0.87	0.85	0.60

What is a Noise Reduction Coefficient (NRC)?

You'll find the NRC rating in the specifications of all of our products. This acronym stands for Noise Reduction Coefficient, and is expressed as a single number, a rating that describes the degree to which acoustic products can absorb sound.

You can use NRC values to understand the overall performance of our acoustic wall and ceiling products. The higher the NRC, the better the product is at soaking up the sound.

Performance Indices: Noise Reduction Coefficient (NRC) results represent the absorption coefficients measured at the one third octave bands at 125, 250, 500, 1000, 2000 and 4000 Hz rounded to the nearest 0.05. Acoustic testing has been performed according to the methods mentioned above. Customization of installation of the product could alter the results. Sound Absorption Average (SAA) indicates the absorption coefficient average for the twelve one-third octave bands ranging between 200 and 2500 Hz.

 For questions or additional product information, visit [acoufelt.com](https://www.acoufelt.com) or call **800.966.8557**.

Cover, Staple Ceiling Panels | January 2026