

Seam Wall Panels

Premier Collection

Combine an elegant, architectural look with high-performance sound absorption. Seam's strong vertical lines elevate and elongate, making a space feel taller and well-structured. Seam's specifying flexibility gives you the latitude to create a one-of-a-kind, inspired space.

Specifications

Surface	Wall
Material	FilaSorb™ polyester felt
Weight	12mm, 0.49 lb./ft ² (±10%) 24mm, 0.98 lb./ft ² (±10%)
Standard Sizes	Width: 12, 24, 36, 48" W Height: 24, 48, 72, 96, 108, 110" H Slat depth: 2, 2.18" D



Seam Wall Panel in Block with Midnight Backer Panel and Multi-colored



Seam Wall Panel in Igloo with White Backer Panel and Pistachio

Technical

NRC Rating	12mm* 0.45, no air gap 0.54, 12mm air gap 0.64, 20mm air gap 24mm* 0.60, no air gap
Fire Test	ASTM E84, Class A CAN/ULC-S102 Flame spread index: 15 Smoke developed index: 200
Water Sorption	ASTM C1104-2019 (A Modified) Water sorbed by weight: 0.20% (based on a 12mm thick panel)
Colorfastness	ISO 105-B02, 6-7

* Test results available upon request

Details

Lead Time	3 - 6 weeks
Origin	Manufactured and assembled in the US
Warranty	Product: 20 years* Colorfastness: 20 years*

* Conditions apply

Environmental

Recycled Content	Minimum 60%
Energy	Generated using 40% solar energy
Indoor Air Quality	VOC less than/equal to 0.5mg/m ³
Recyclable	100%*
Certifications	Declare Certification - LBC Red List Free (third-party verified) SCS Global Indoor Advantage Gold

* PET is recyclable through participating partners



For questions or additional product information, visit [acoufelt.com](https://www.acoufelt.com) or call 800.966.8557.

Seam Wall Panels | January 2026

Colorways

PREMIER



White
WH12



Milkyway
MI74



Ivory
IV11



Pearl
PE21



Valentine
VA70



Quartz
QU67



Stonewash
ST72



Sea Salt
SE57



Platinum
PL04



Almond
AL55



Pistachio
PI25



Turmeric
TU60



Flamingo
FL61



Amethyst
AM69



Periwinkle
PE23



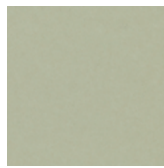
Peacock
PE20



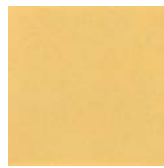
Metal
ME03



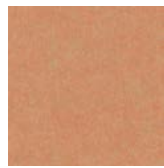
Mushroom
MU75



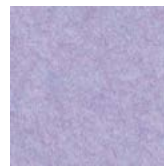
Celery
CE65



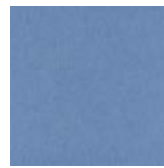
Wheat
WH68



Peach
PE19



Lilac
LI13



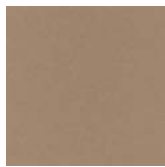
Marine
MA15



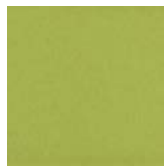
Sencha
SE58



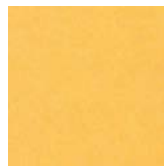
Grey
GR02



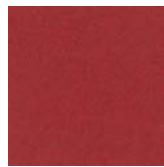
Umber
UM54



Wasabi
WA29



Popcorn
PO26



Currant
CU59



Berry
BE06



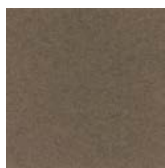
Azure
AZ05



Oregano
OR18



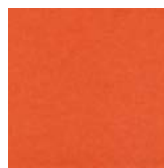
Charcoal
CH01



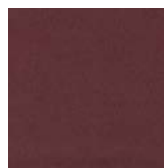
Walnut
WA56



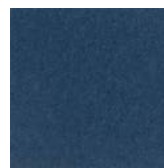
Eucalyptus
EU71



Carrot
CA08



Loganberry
LO77



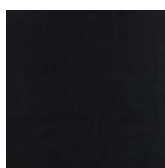
Granite
GR62



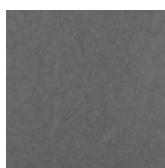
Denim
DE09



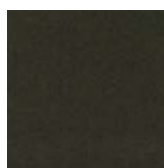
Kale
KA12



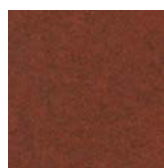
Piano Black
PI24



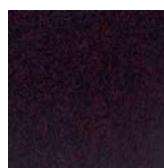
Slate
SL27



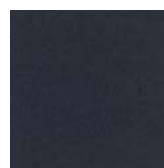
Nori
NO76



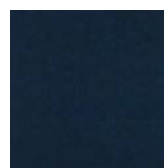
Peppercorn
PE22



Shiraz
SH63




Flint
FL64



Midnight
MI16

Order samples at acoufelt.com/colorways

 For questions or additional product information, visit acoufelt.com or call 800.966.8557.

Seam Wall Panels | January 2026

Sizes: Block

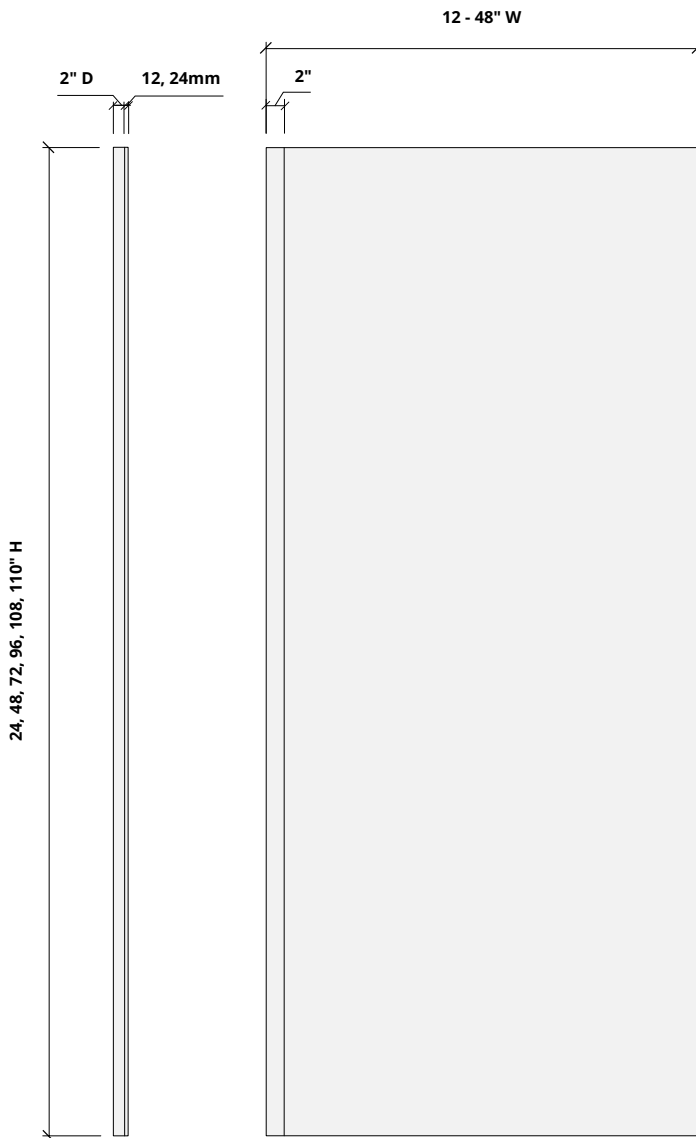
Standard Sizes

Width: 12, 24, 36, 48" W

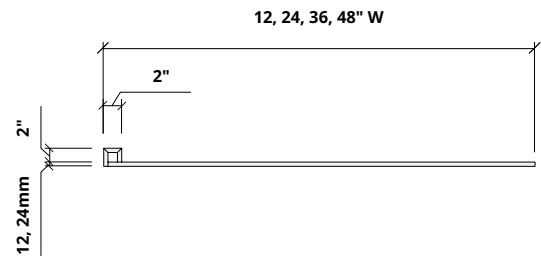
Height: 24, 48, 72, 96, 108, 110" H

Slat depth: 2" D

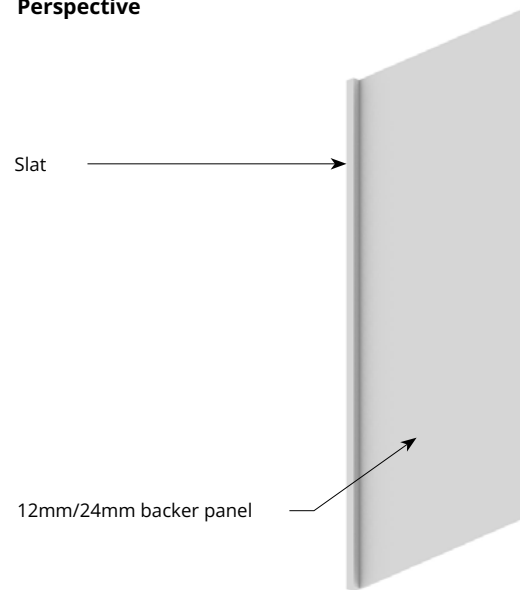
Elevations



Plan



Perspective



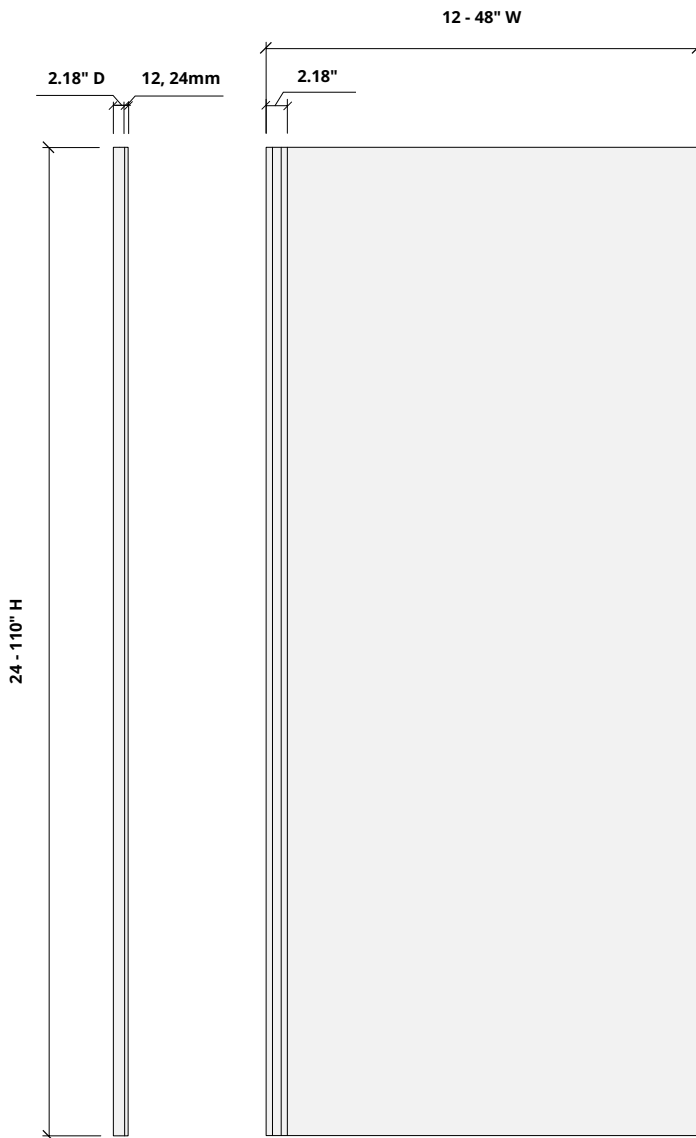
For questions or additional product information, visit [acoufelt.com](https://www.acoufelt.com) or call 800.966.8557.

Seam Wall Panels | January 2026

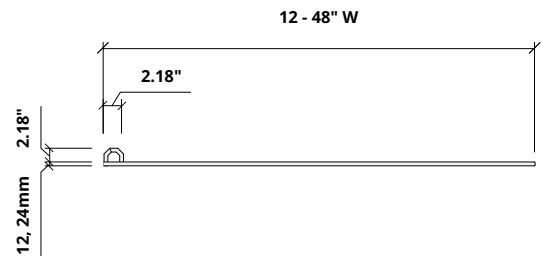
Sizes: Igloo

Standard Sizes Width: 12 - 48" W
 Height: 24 - 110" H
 Slat depth: 2.18" D

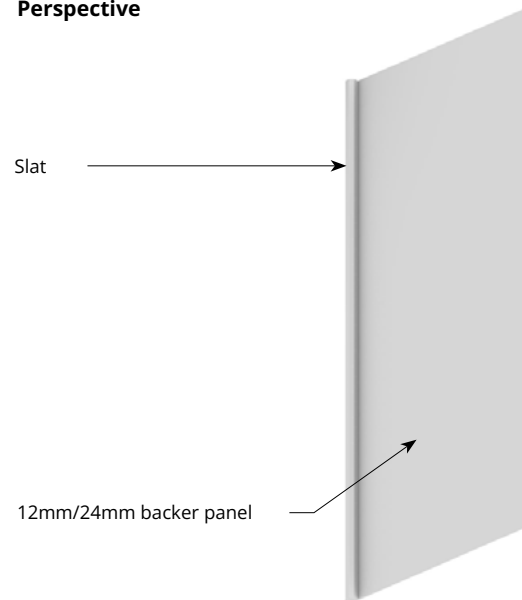
Elevations



Plan



Perspective



How to Specify

1. Choose Panel Height

2. Choose Panel Design

3. Choose Colorway

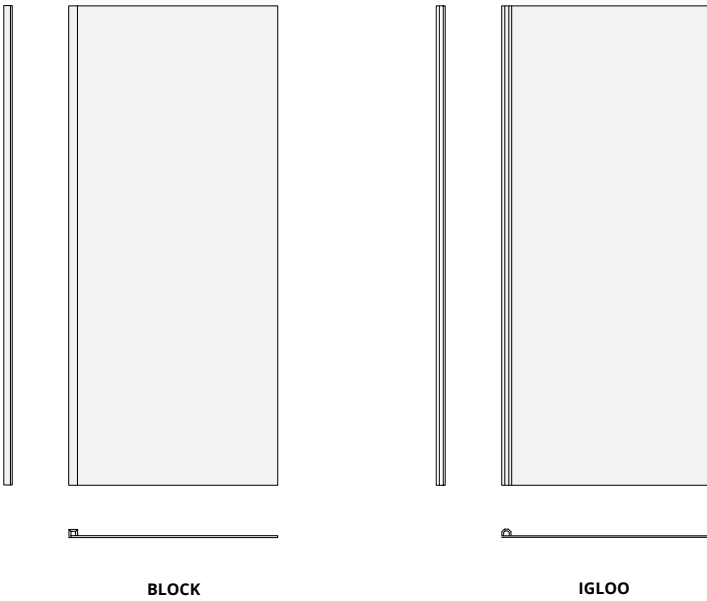
Determine preferred width and height.

1. Choose Panel Height

2. Choose Panel Design

3. Choose Colorway

Select desired panel pattern and size that best fits your project's design.



BLOCK

IGLOO

1. Choose Panel Height

2. Choose Panel Design

3. Choose Colorway

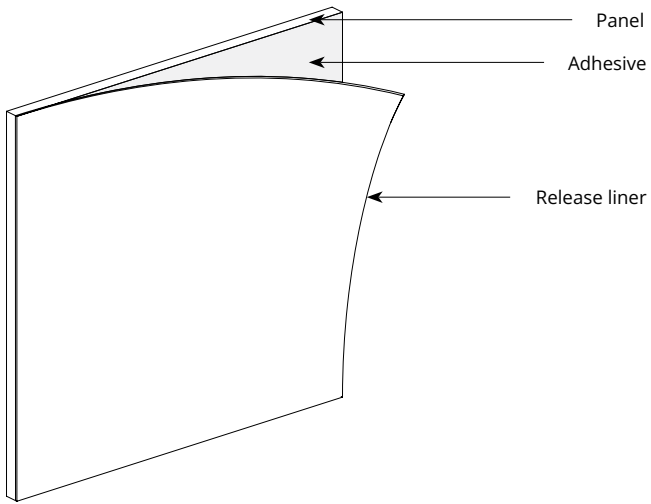
Select a color for the backer panel and one or multiple colors for block or seams. See colorways on page 3.



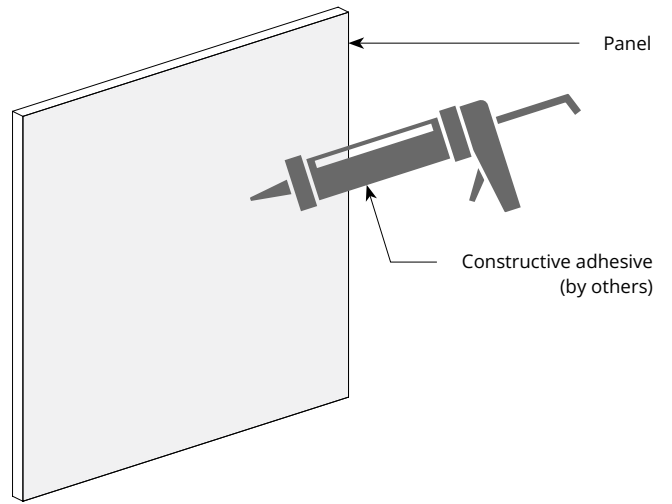
Seam Igloo in White and Pistachio

Mounting Methods

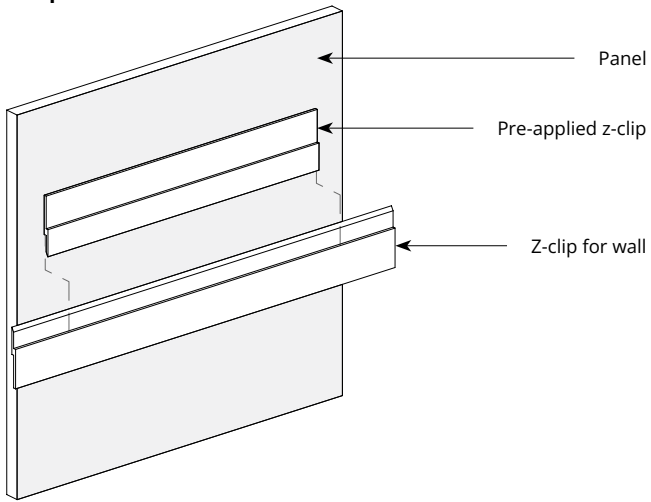
Adhesive backing



Construction adhesive



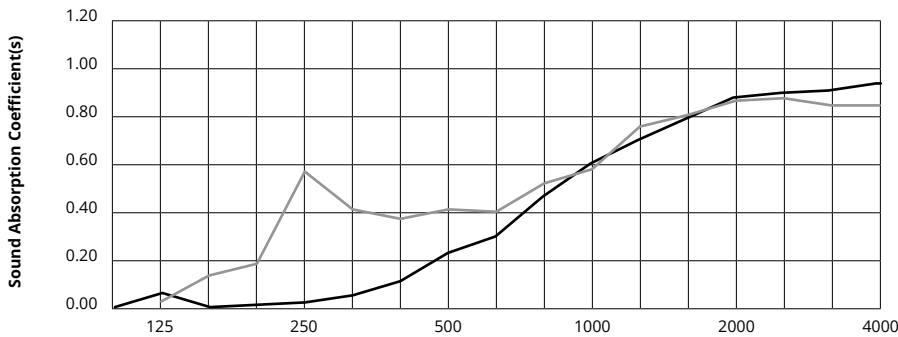
Z-clip wall mount



** For wall mount applications only.*

Acoustic Performance

Test Method	ASTM C423-09a
Install Method	A
Rating Method	ISO 11654-2002
Test Results	<p>12mm</p> <p>0.45, no air gap 0.54, 12mm air gap 0.64, 20mm air gap SAA 0.43, no air gap SAA 0.54, 12mm air gap SAA 0.63, 20mm air gap</p> <p>24mm</p> <p>0.60, no air gap SAA 0.55, no air gap</p>




	Frequency f (Hz)	125	250	500	1000	2000	4000	NRC
	12mm	0.06	0.02	0.23	0.61	0.89	0.95	0.45
	24mm	0.02	0.57	0.41	0.58	0.87	0.85	0.60

What is a Noise Reduction Coefficient (NRC)?

You'll find the NRC rating in the specifications of all of our products. This acronym stands for Noise Reduction Coefficient, and is expressed as a single number, a rating that describes the degree to which acoustic products can absorb sound.

You can use NRC values to understand the overall performance of our acoustic wall and ceiling products. The higher the NRC, the better the product is at soaking up the sound.

Performance Indices: Noise Reduction Coefficient (NRC) results represent the absorption coefficients measured at the one third octave bands at 125, 250, 500, 1000, 2000 and 4000 Hz rounded to the nearest 0.05. Acoustic testing has been performed according to the methods mentioned above. Customization of installation of the product could alter the results. Sound Absorption Average (SAA) indicates the absorption coefficient average for the twelve one-third octave bands ranging between 200 and 2500 Hz.

 For questions or additional product information, visit [acoufelt.com](https://www.acoufelt.com) or call **800.966.8557**.

Seam Wall Panels | January 2026